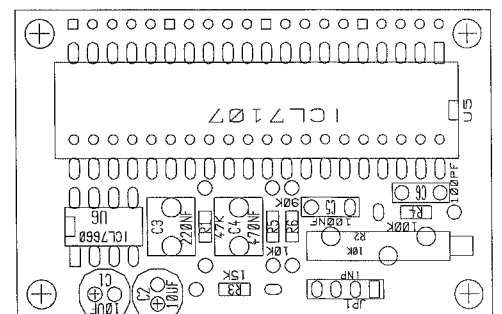
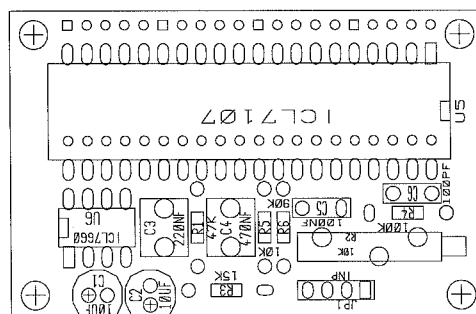
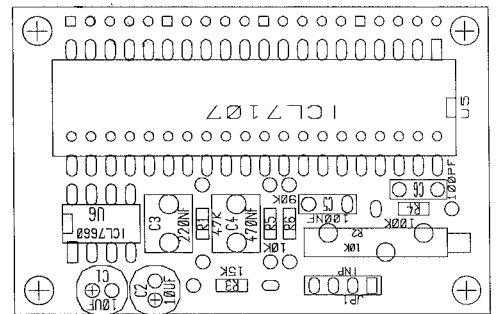
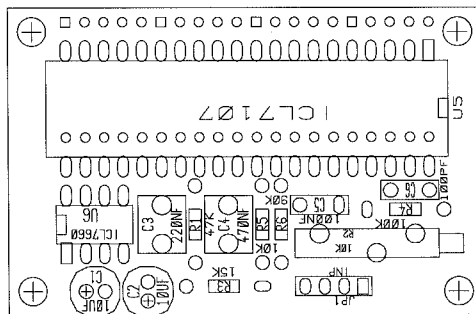
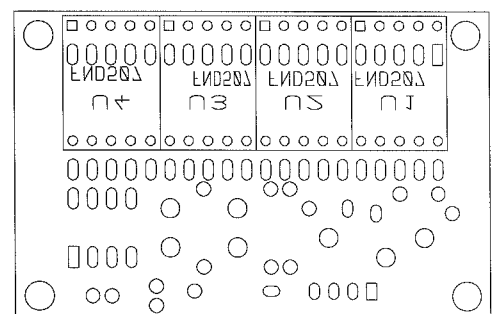
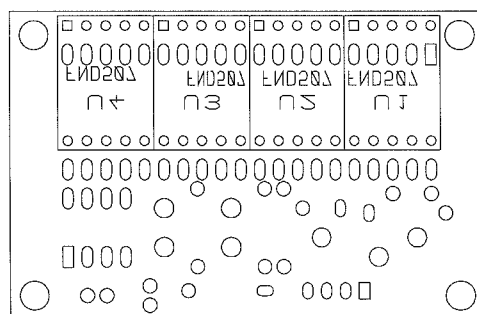
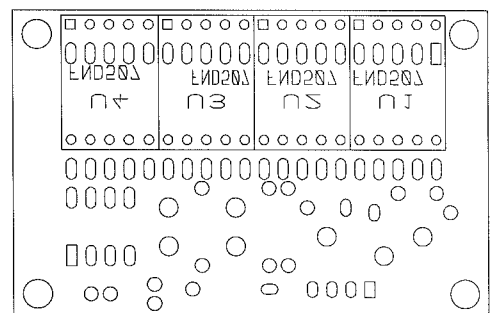
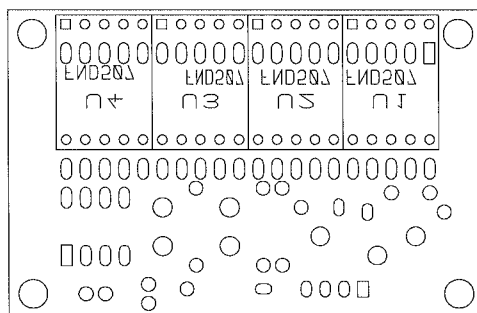
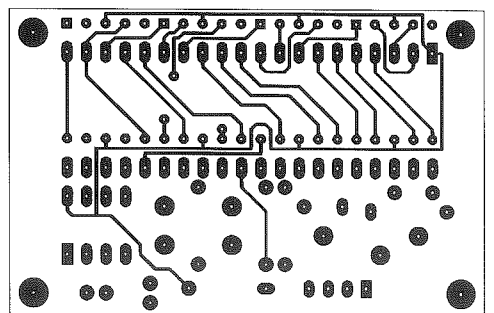
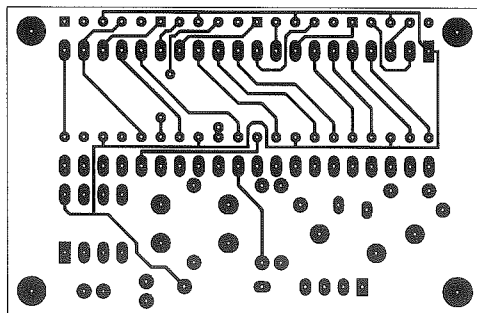
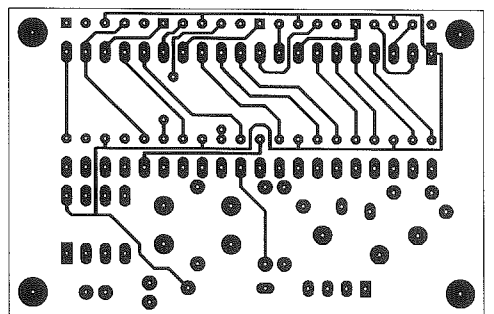
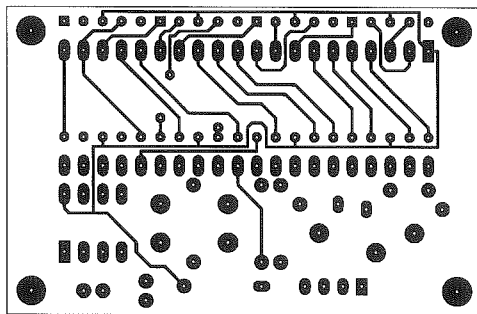
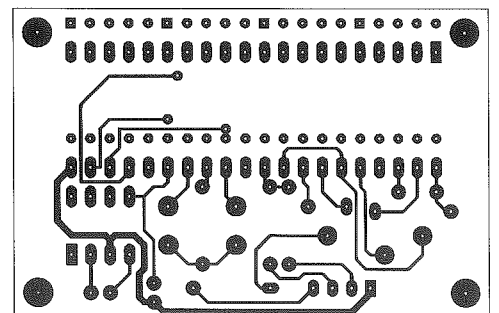
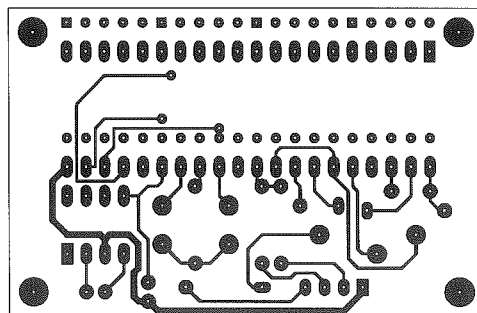
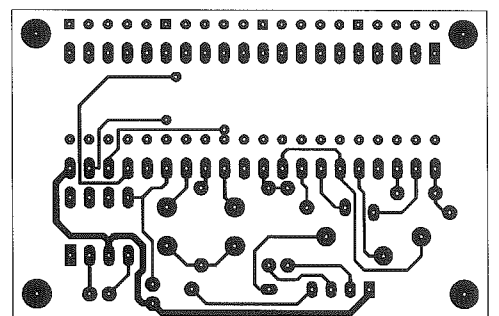
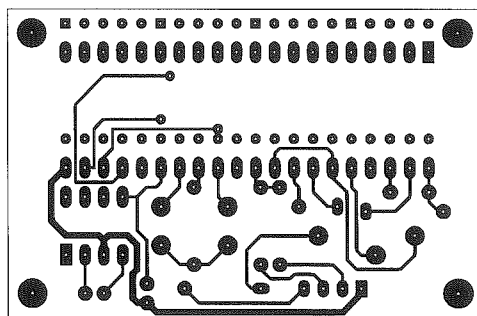


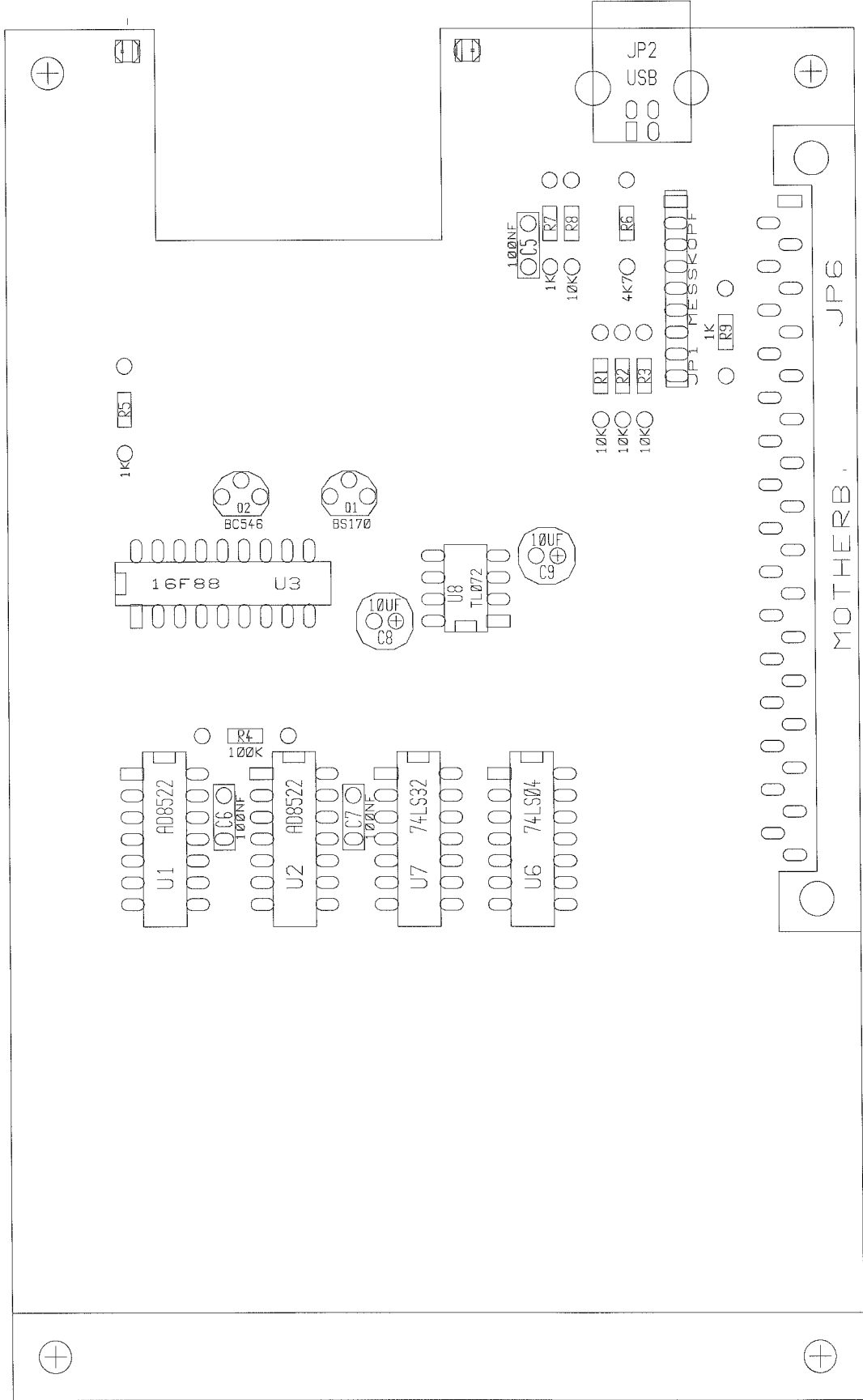
14

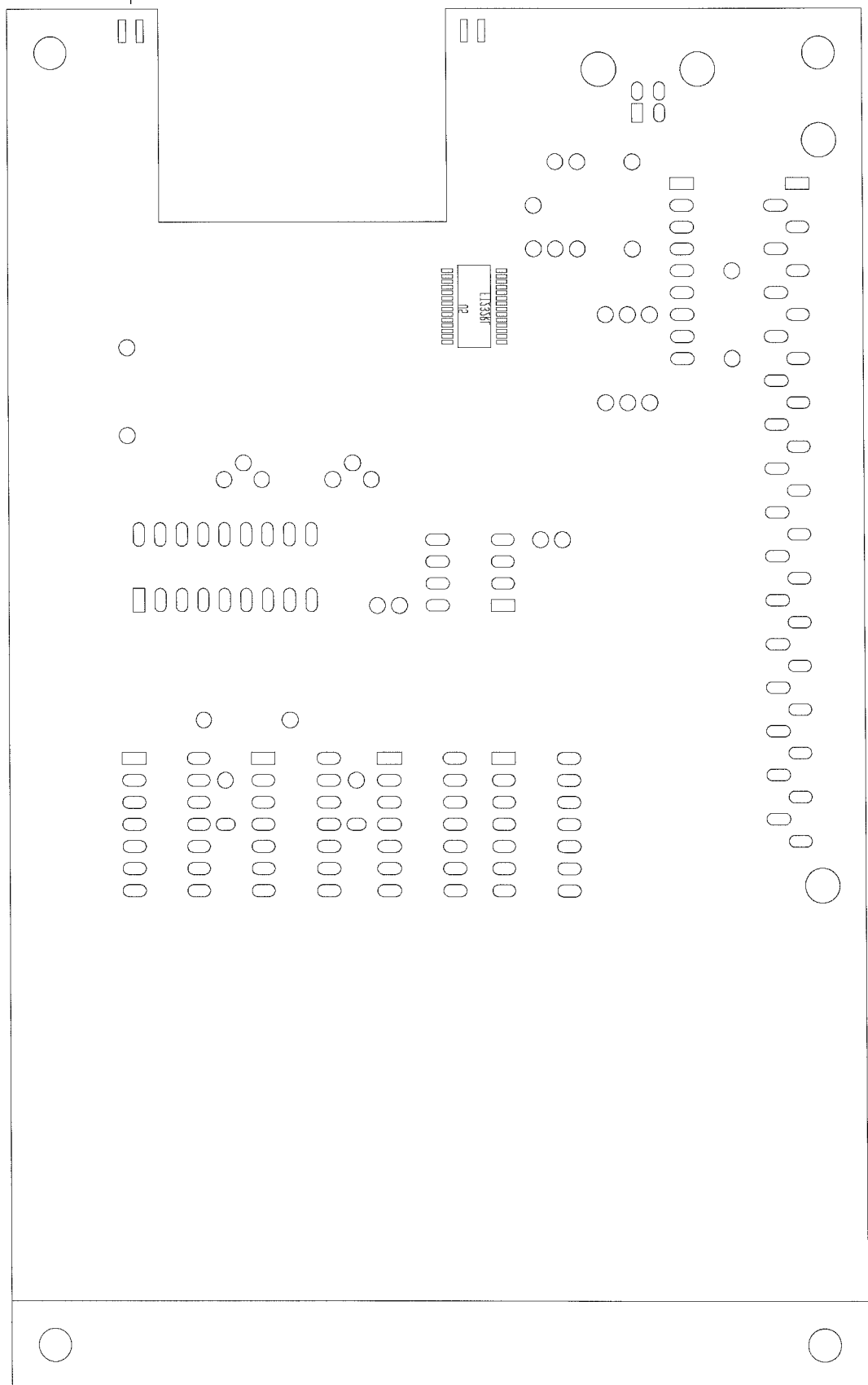


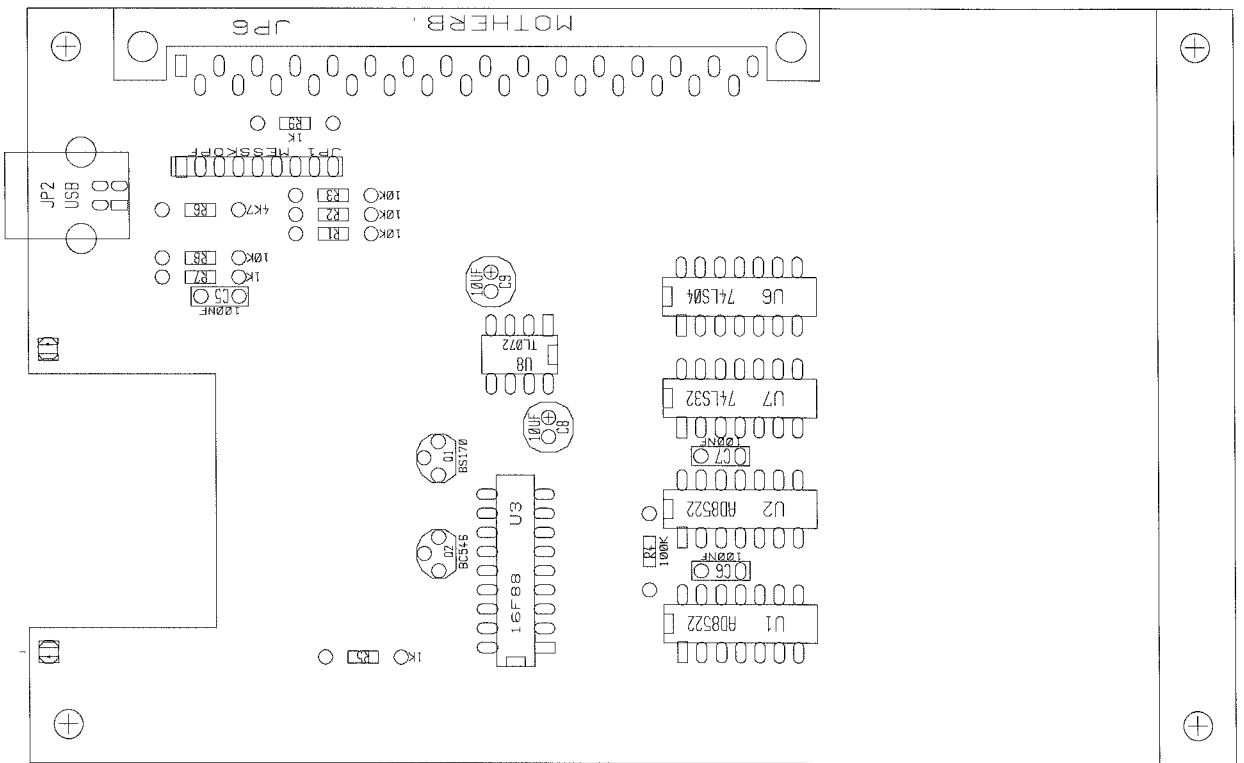


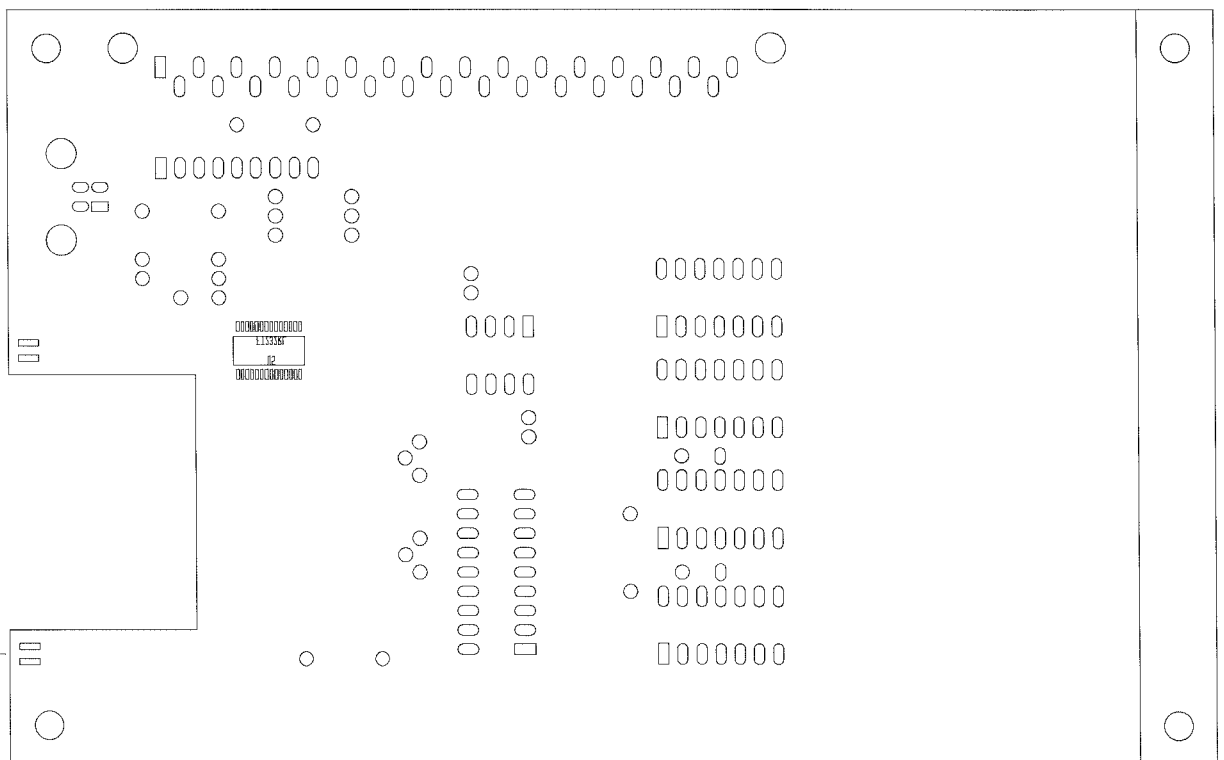


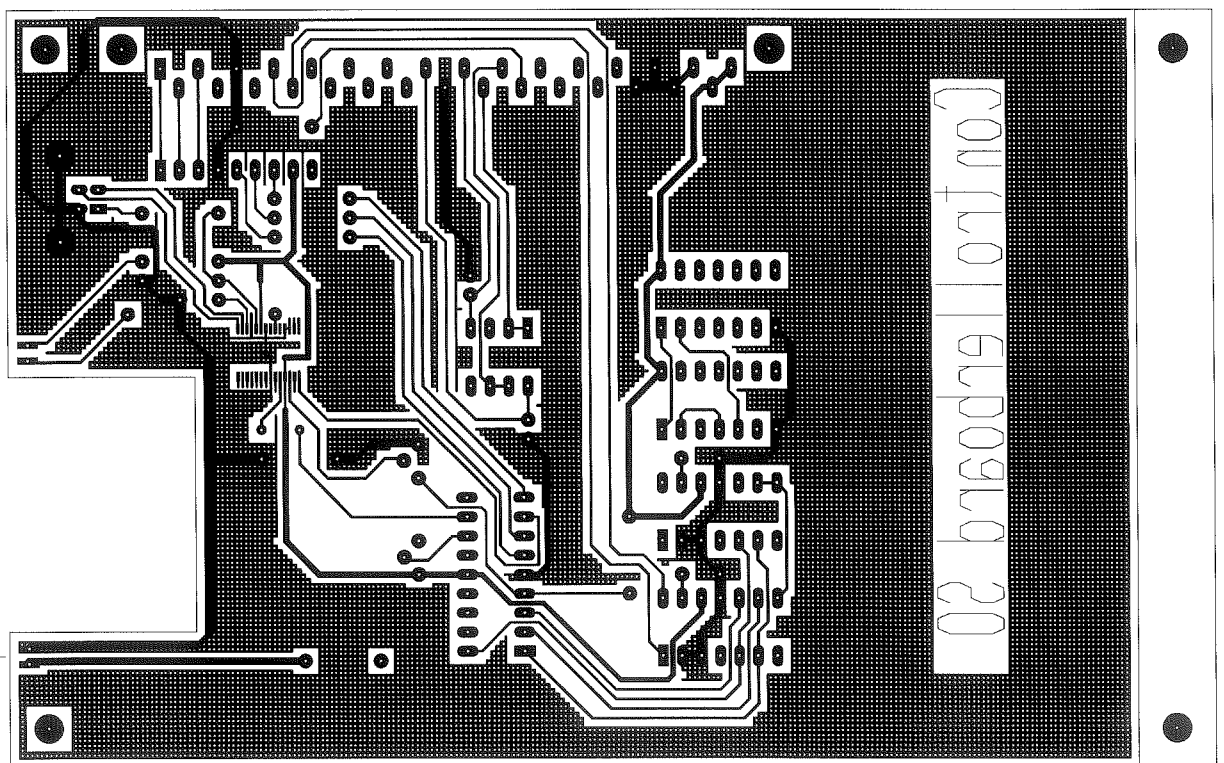




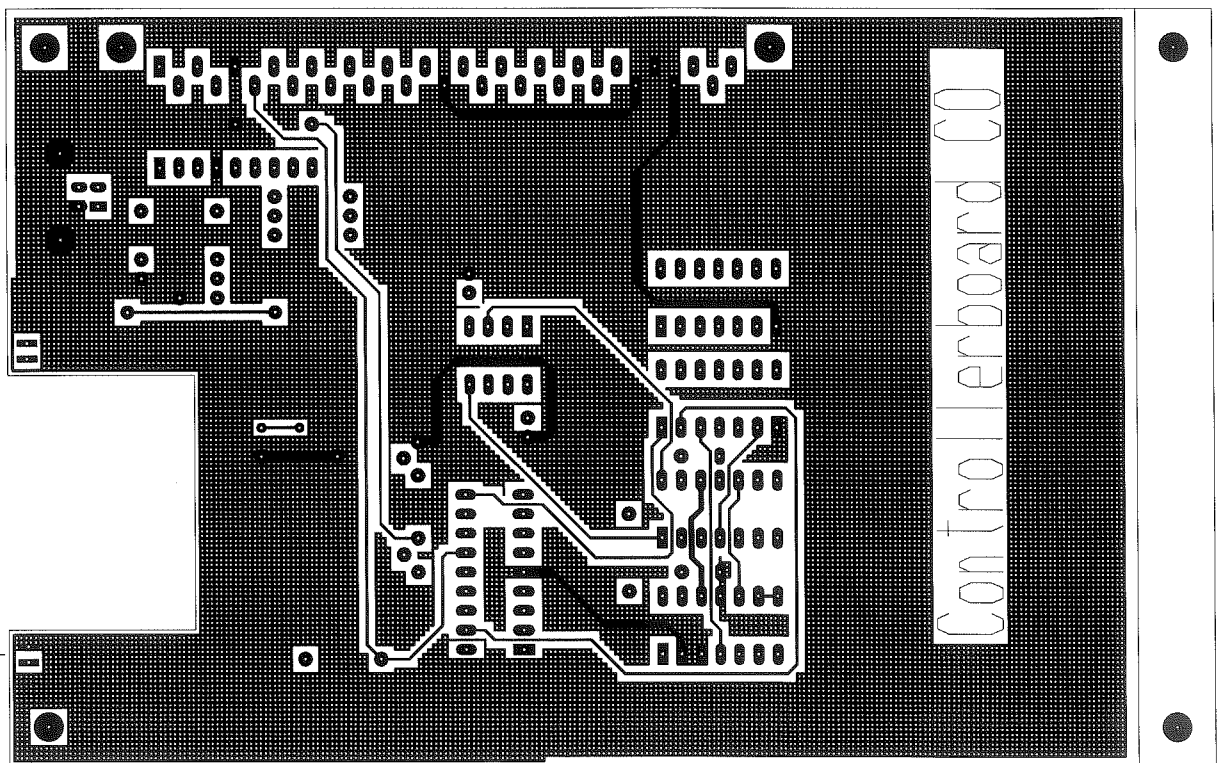


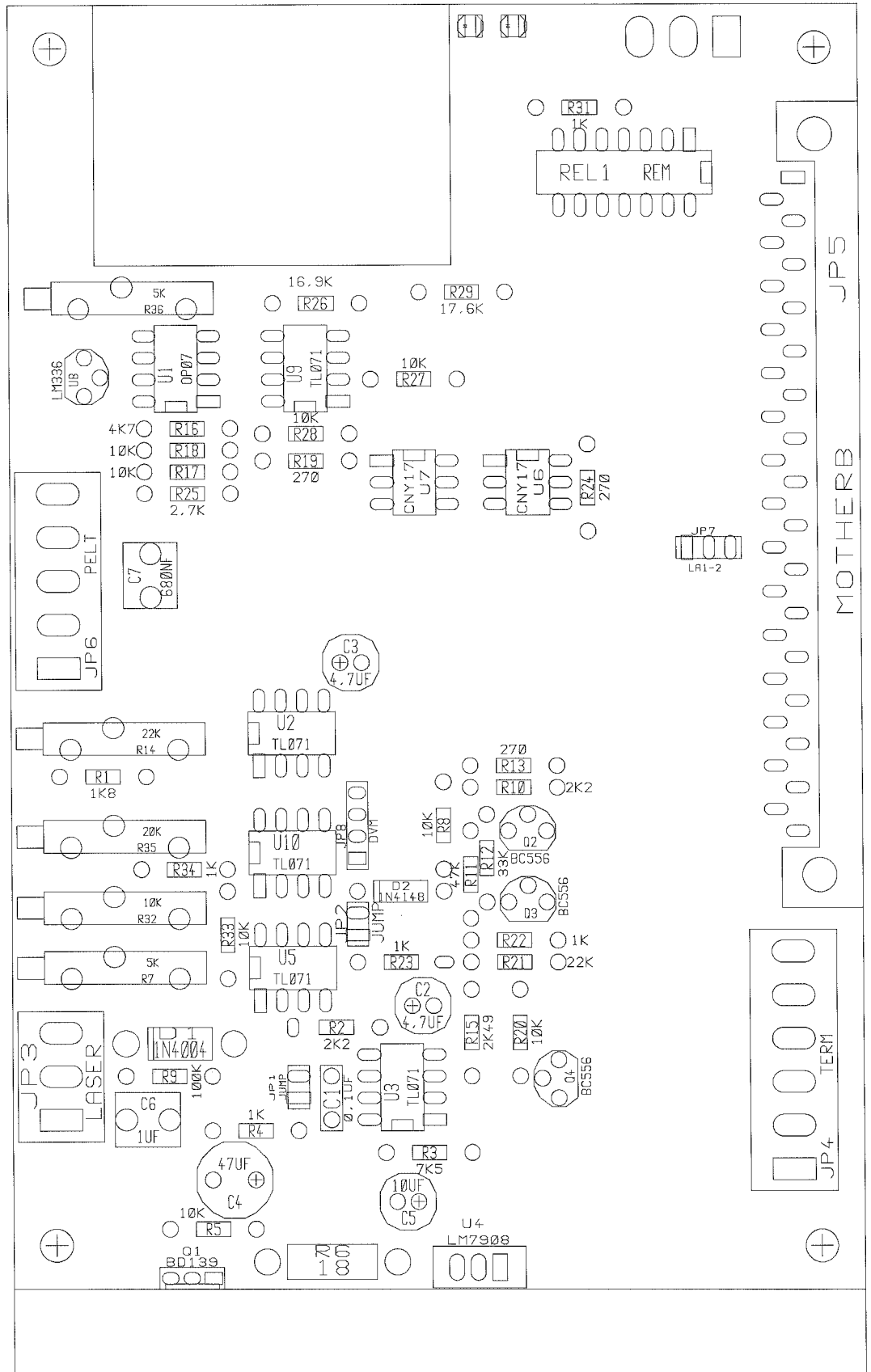


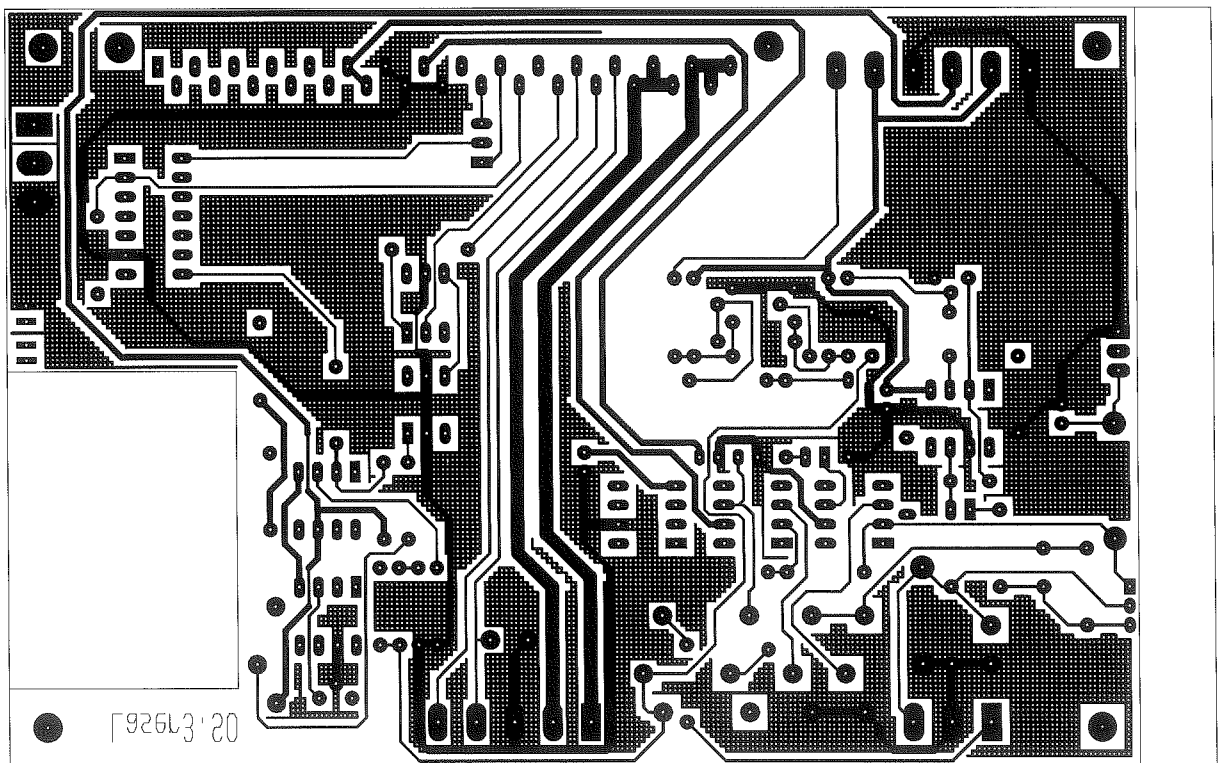


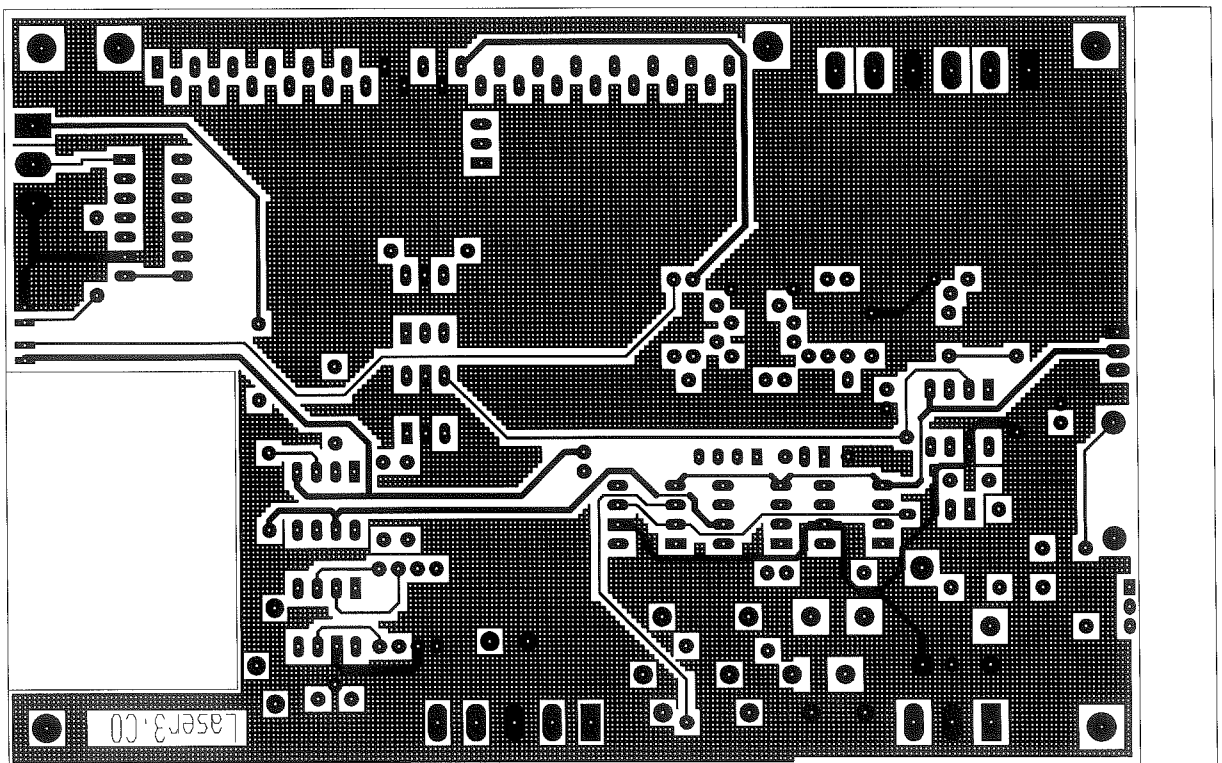


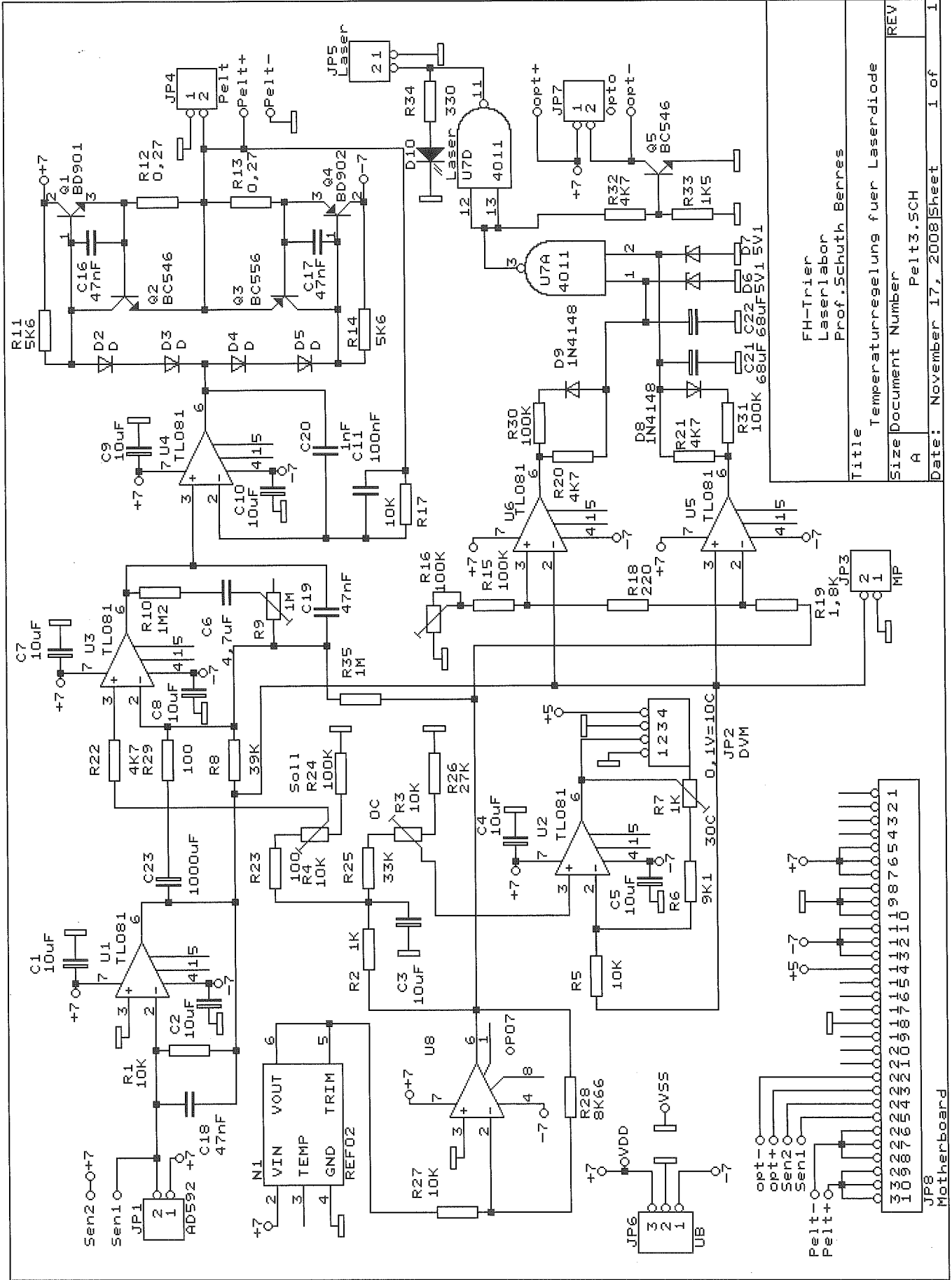
02 0760079 | 07T 00





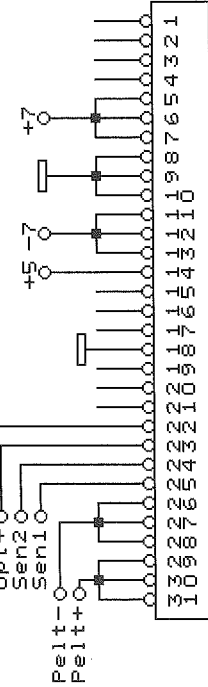




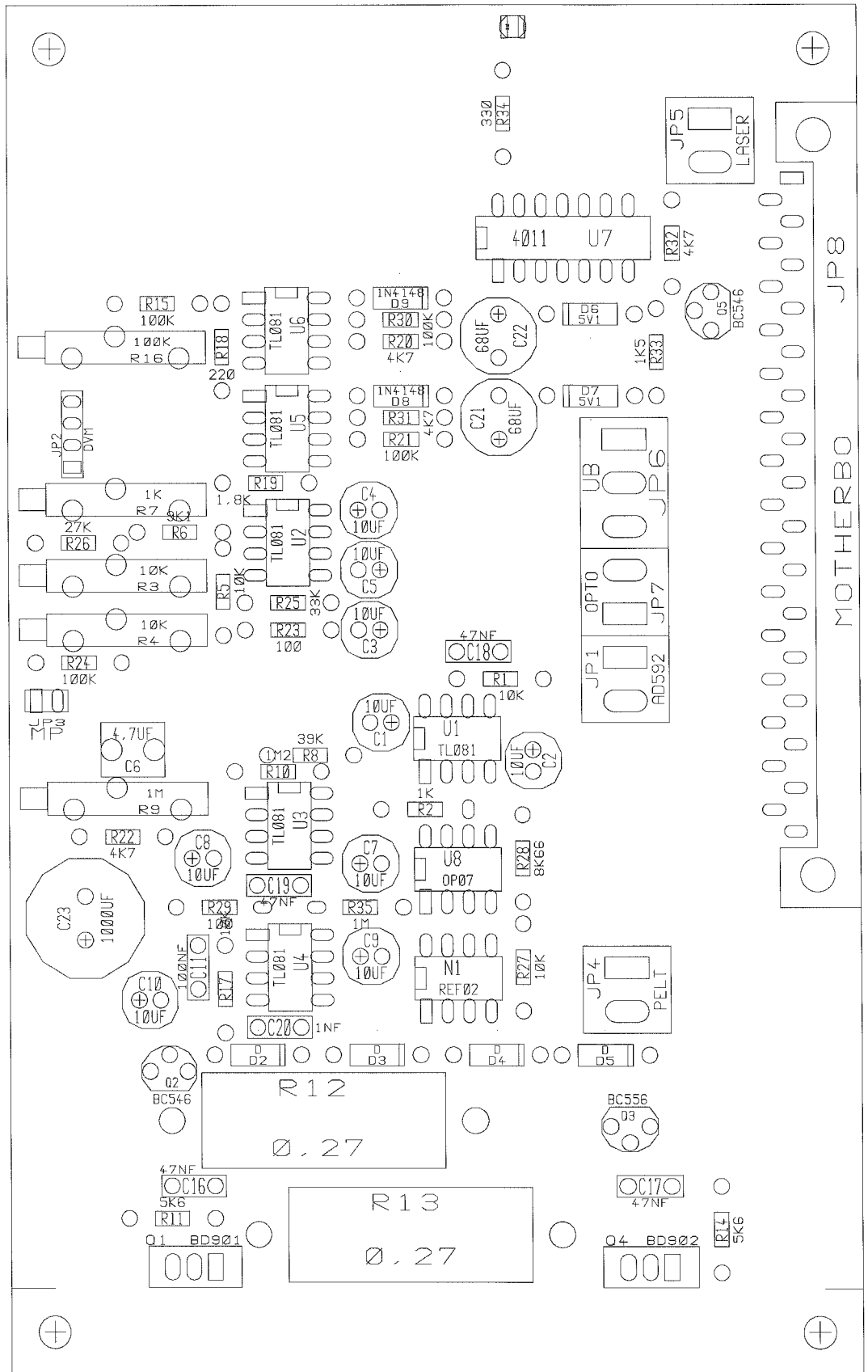


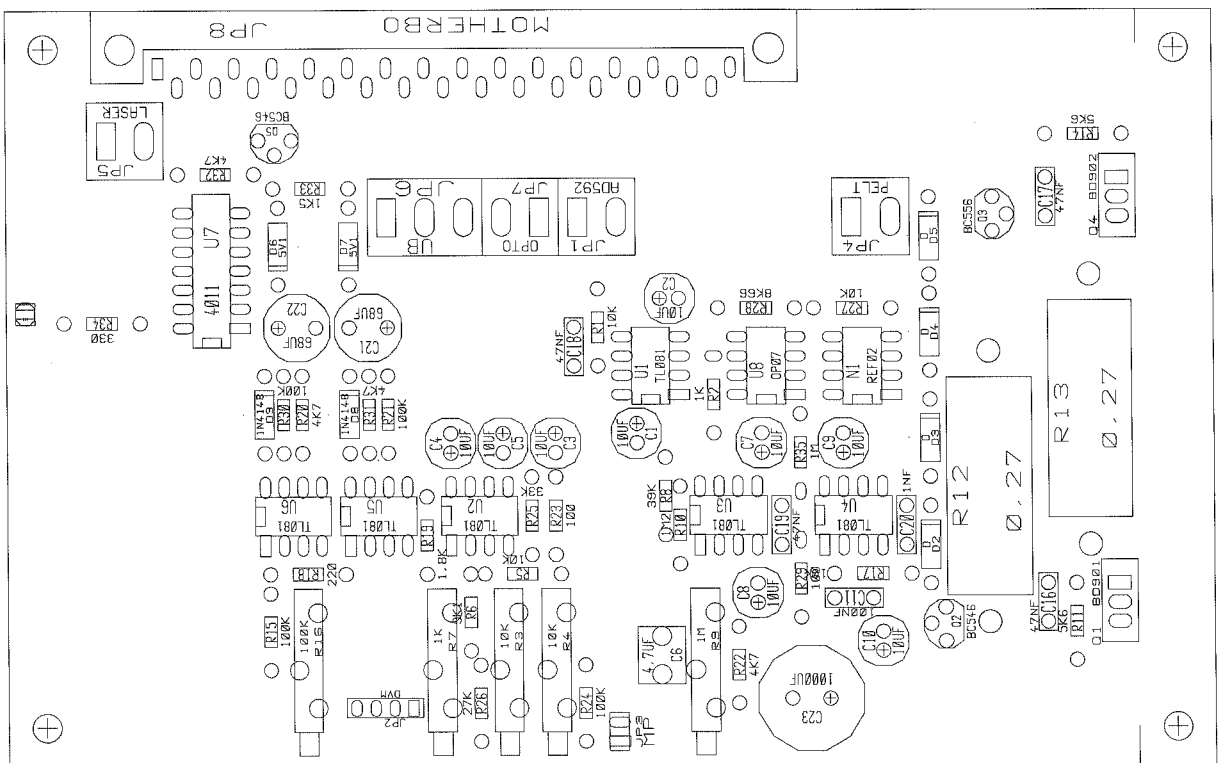
FH-Trier
 Laserlabor
 Prof. Schuth Berres

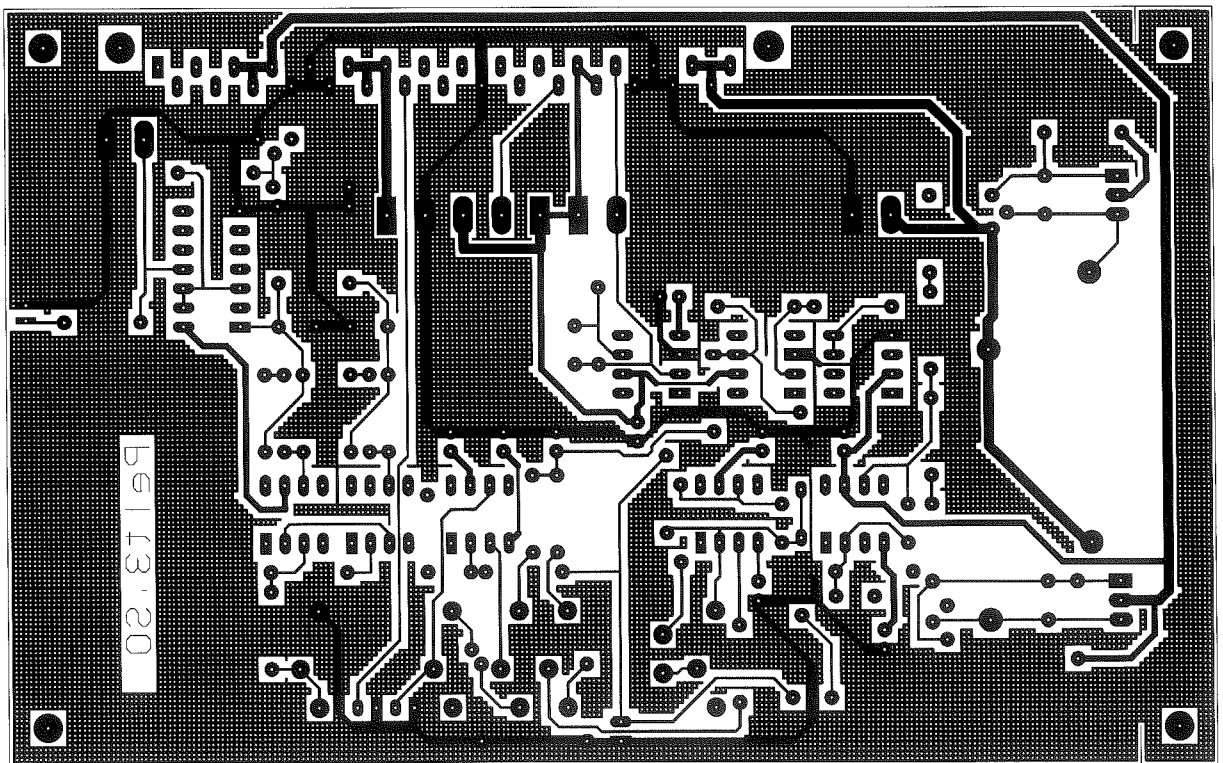
Title	Temperaturregelung fuer Laserdiode
Size	A
Document Number	Pelt3.SCH
Date:	November 17, 2008
Sheet	1 of 1

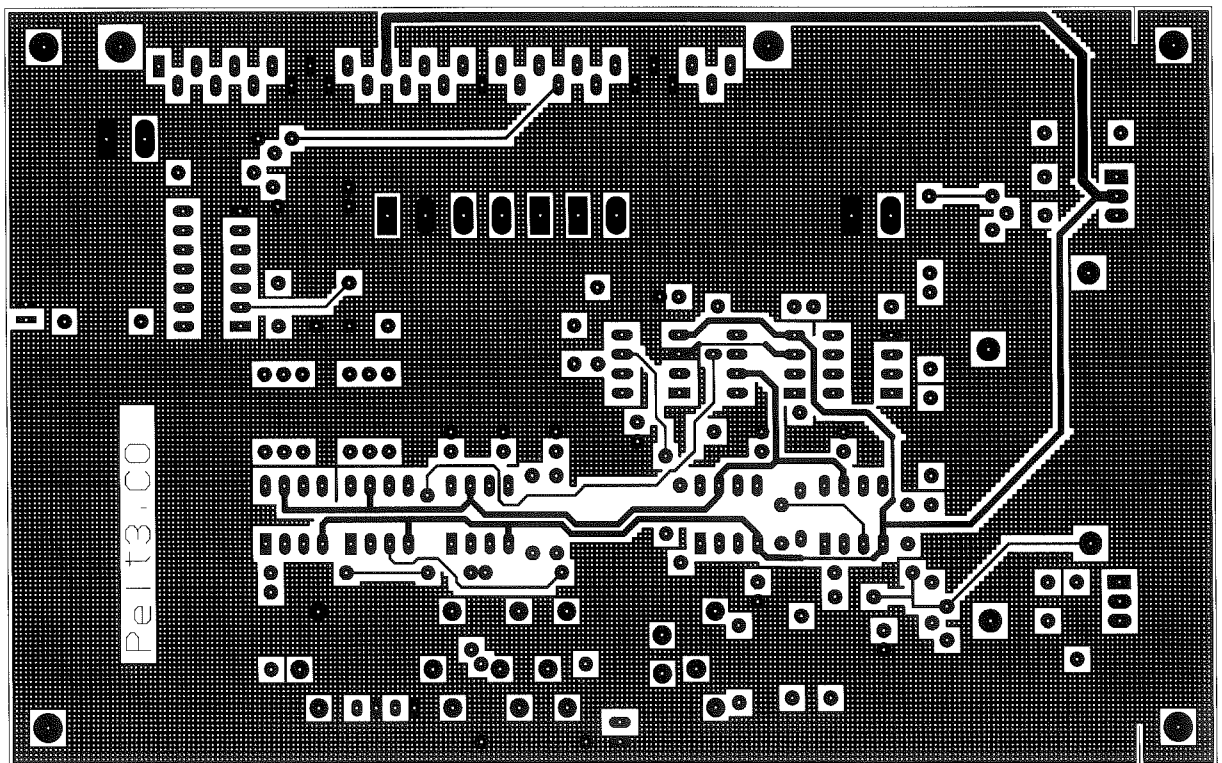


JP8
 Motherboard

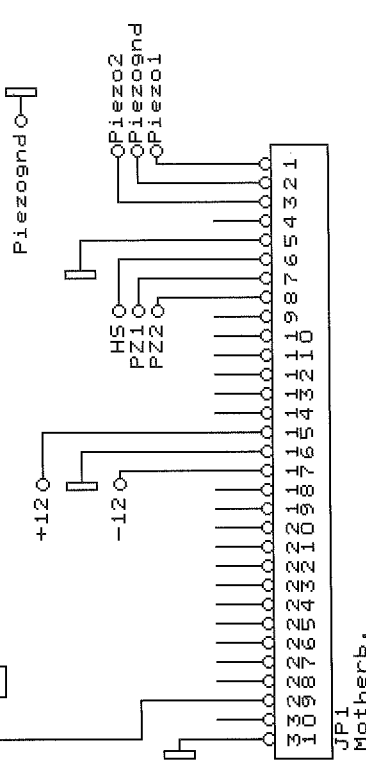
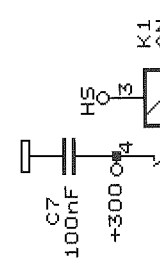
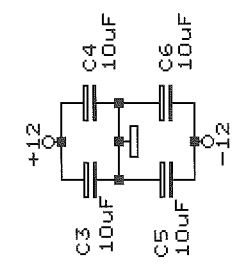
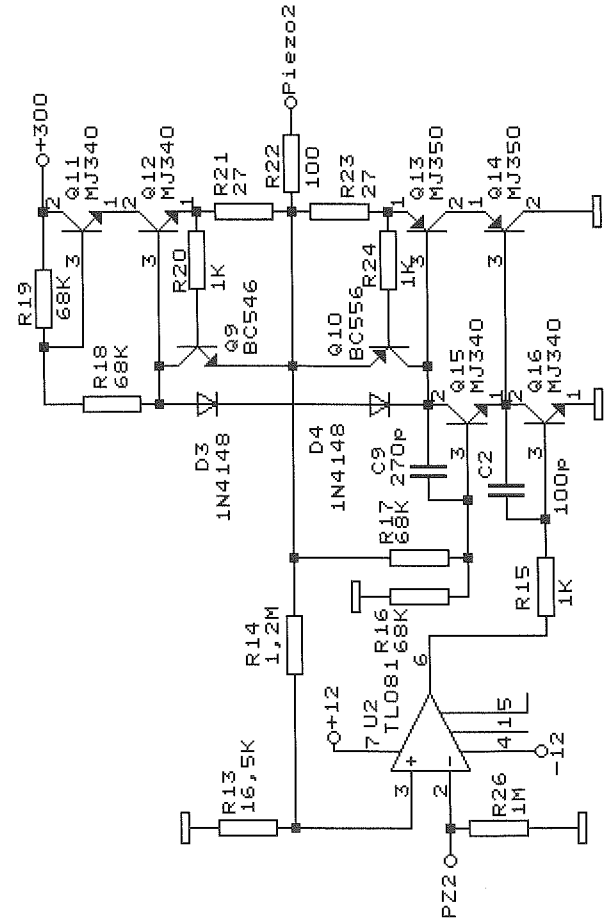
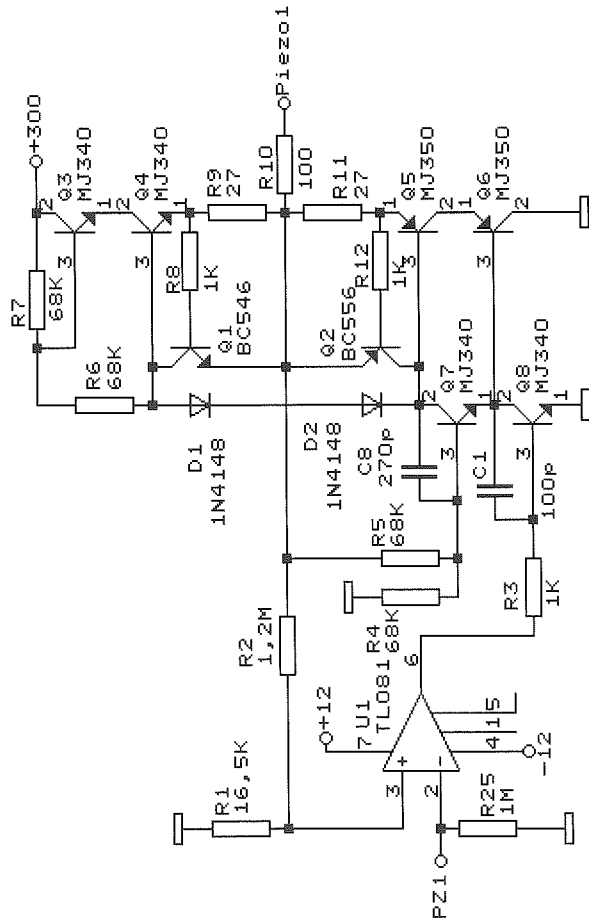






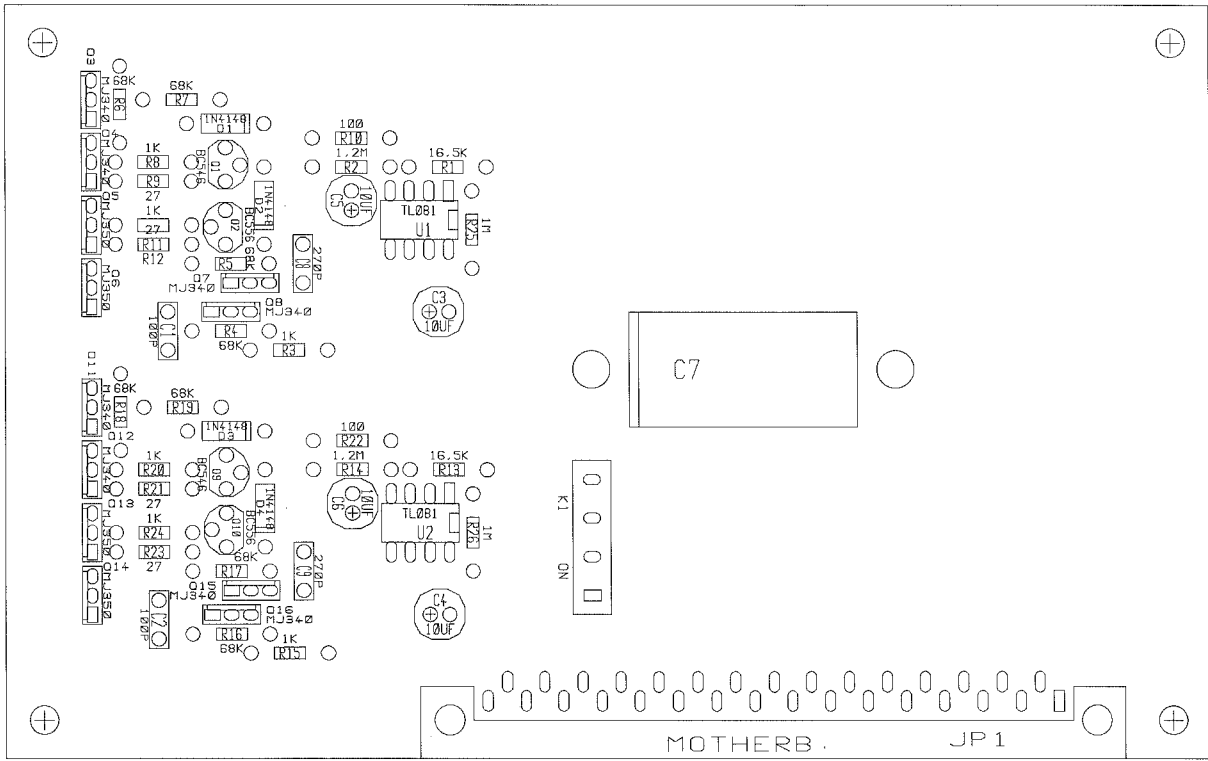


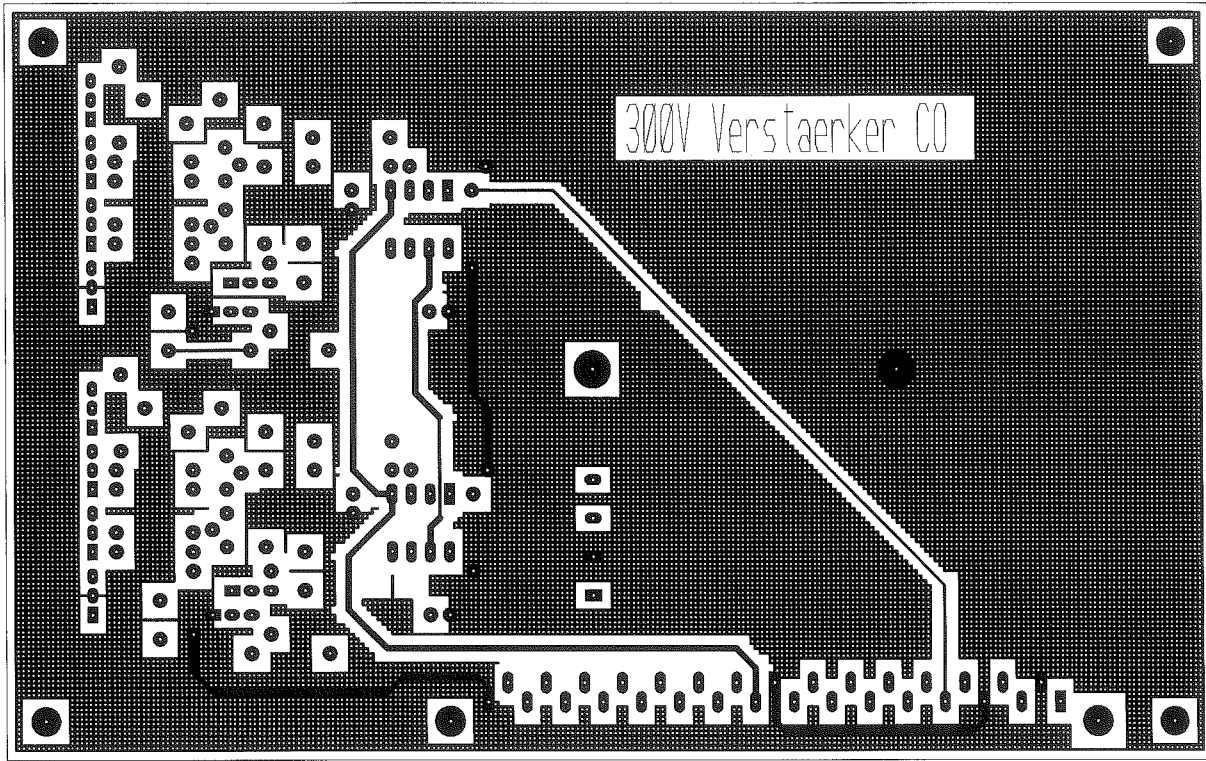
ACHTUNG! Endtransistoren Glimmerscheiben
doppelte Staerke!!



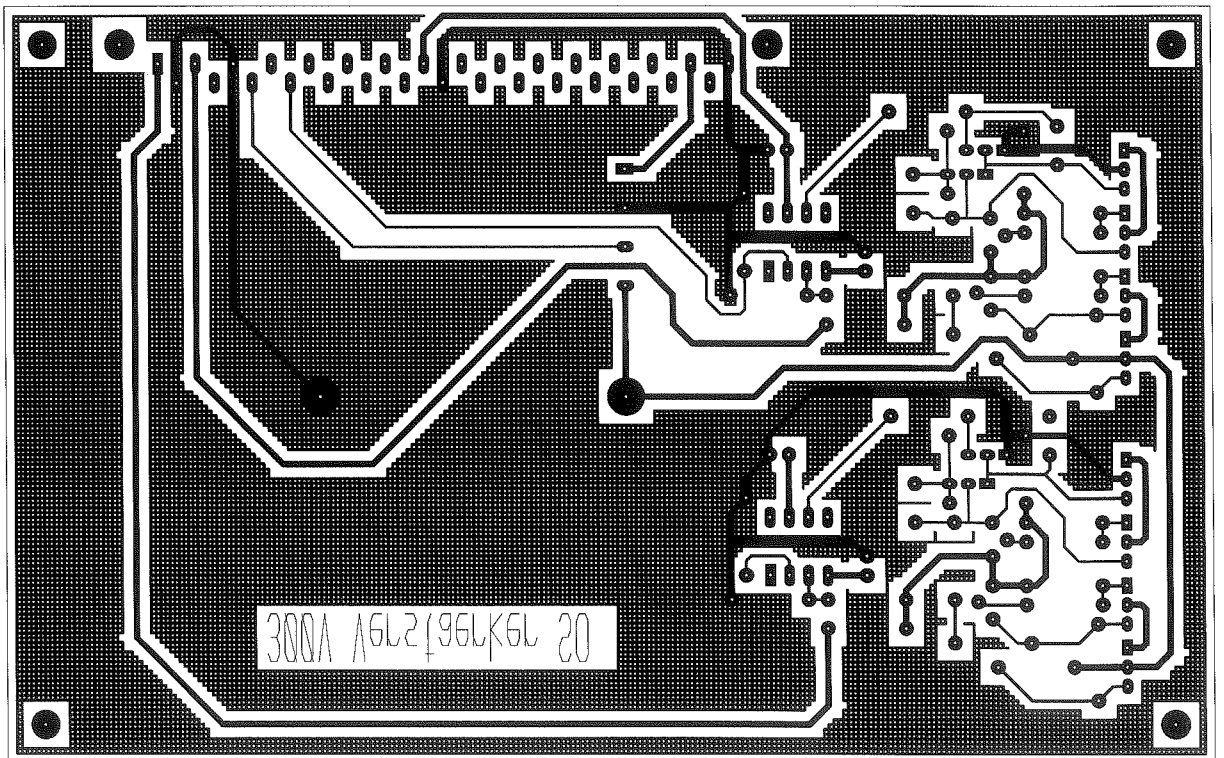
FH-Trier
Laserlabor MB
Prof. Schuth R-Berres

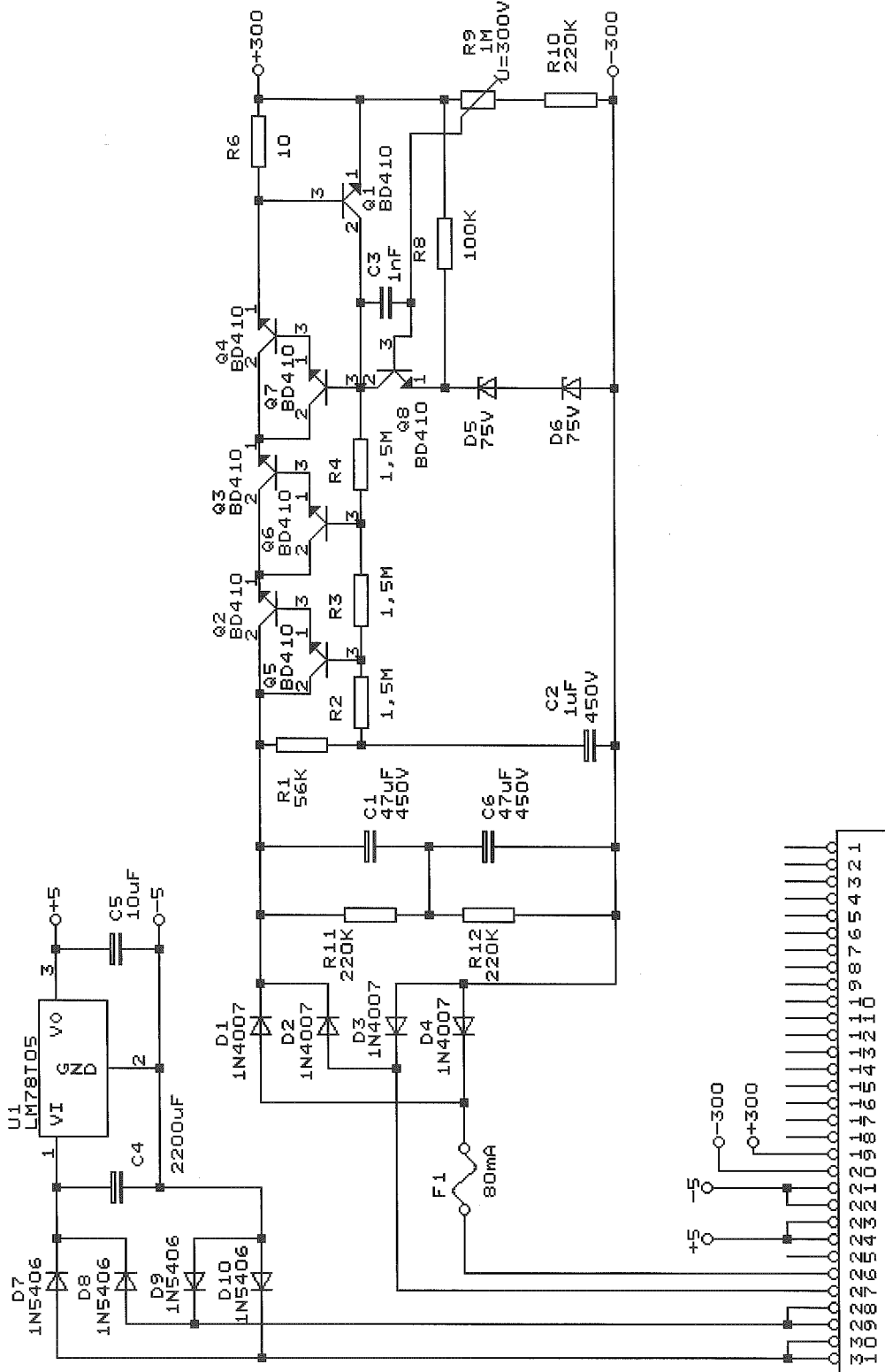
Title	
300V Verstaerker fuer Piezoelement	
Size	Document Number
A	Piezol.SCH
Date:	November 17, 2008
Sheet	1 of 1
REV	





300V Verstaerker CO

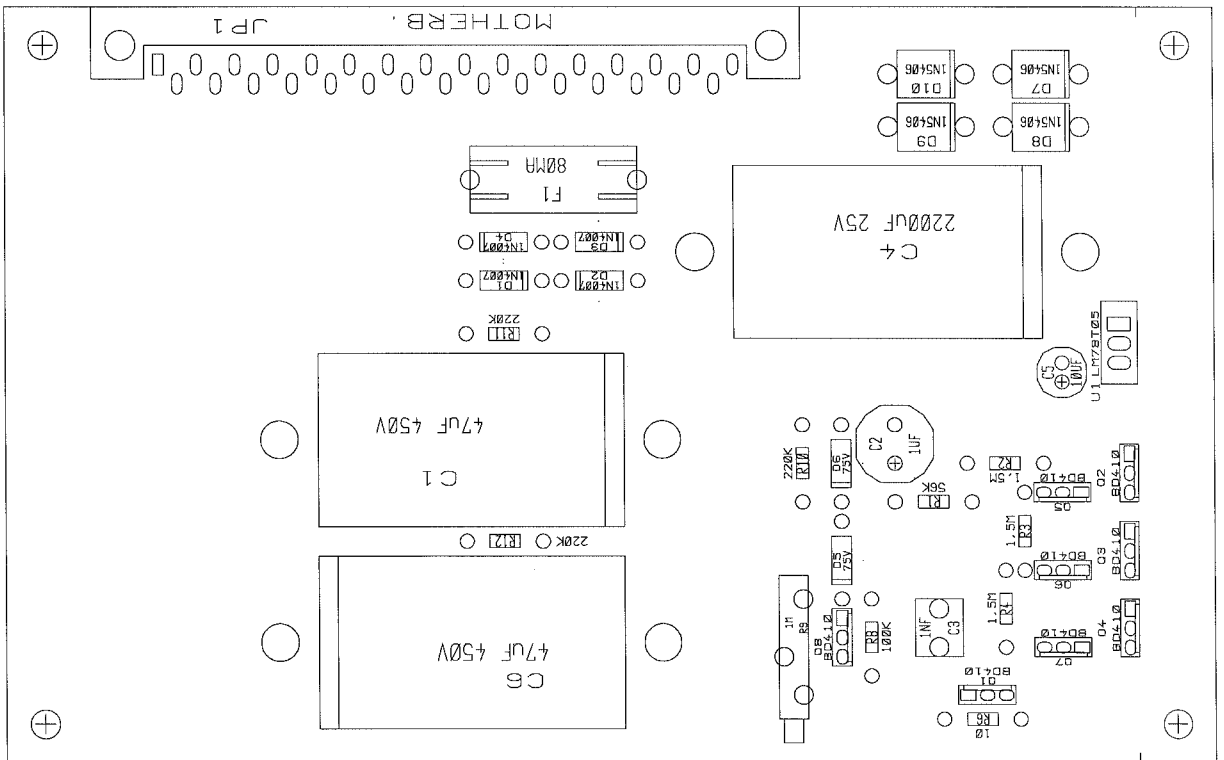


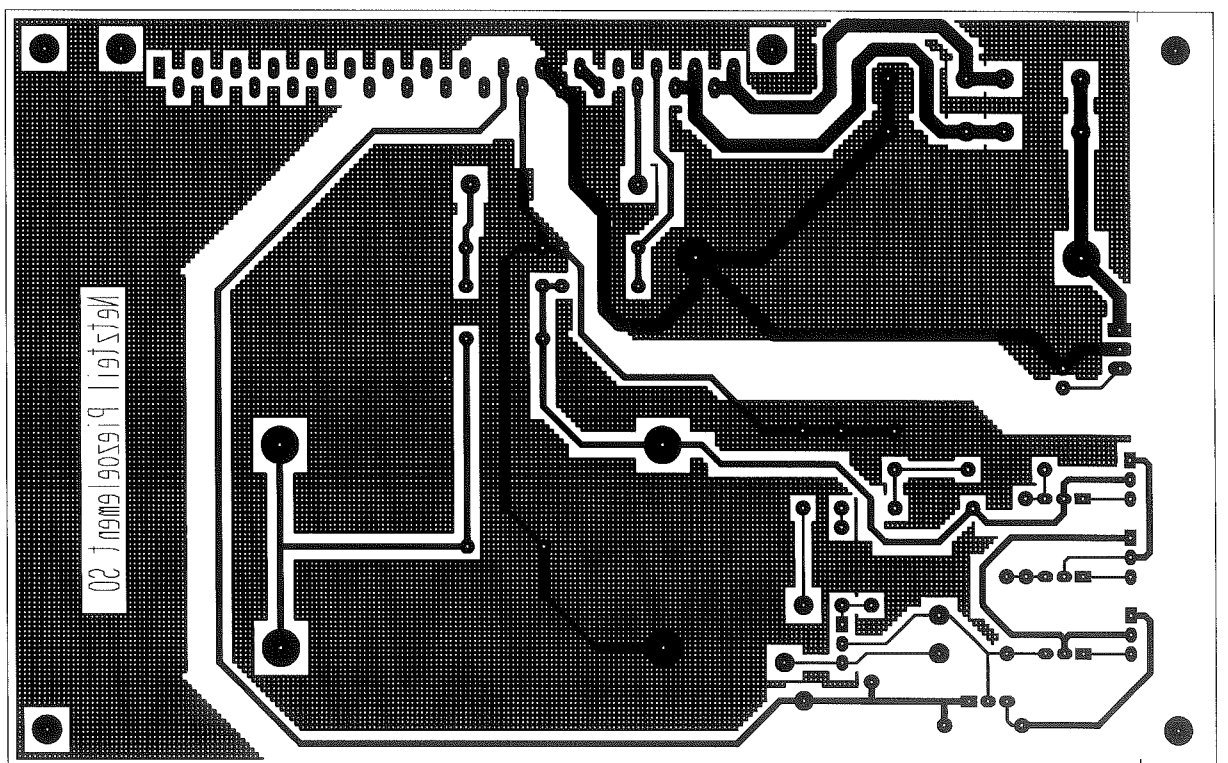


JP1
Motherb.

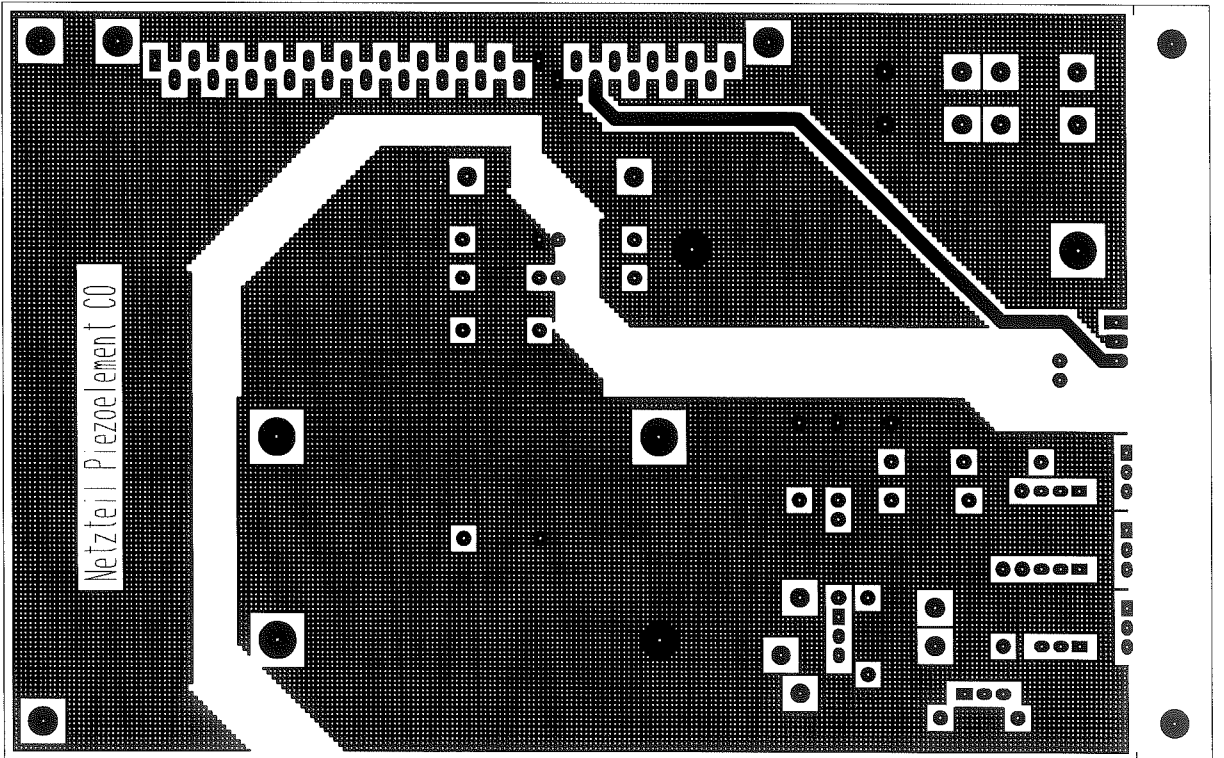
FH-Trier MB
Laserlabor
Prof.Schuth Berres

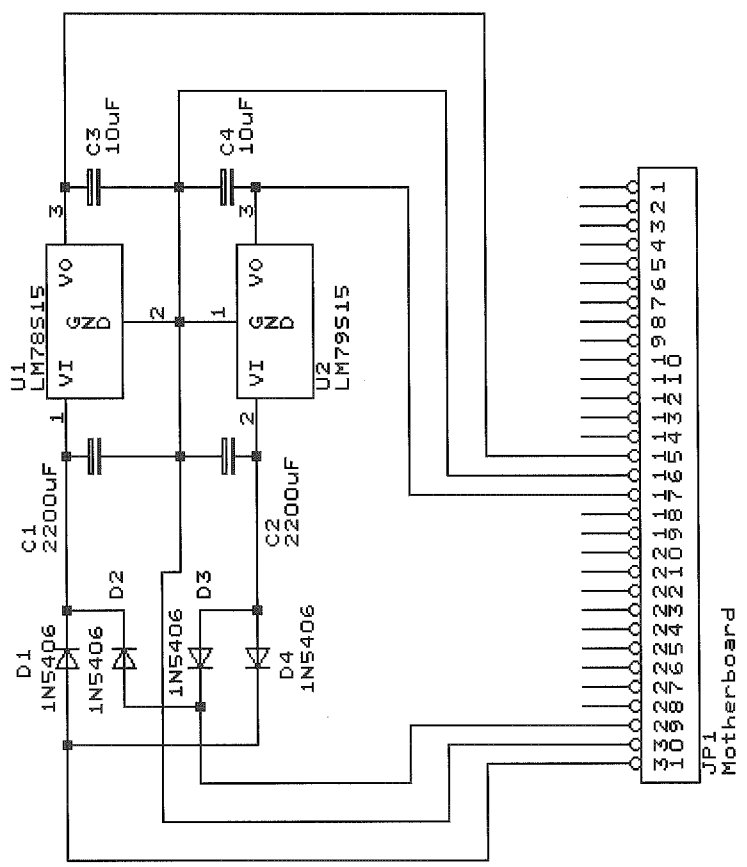
Title		Netzteil fuer Piezosteuerung
Size	Document Number	NT301.SCH
A		
Date:	September 18, 2008	Sheet 1 of 1





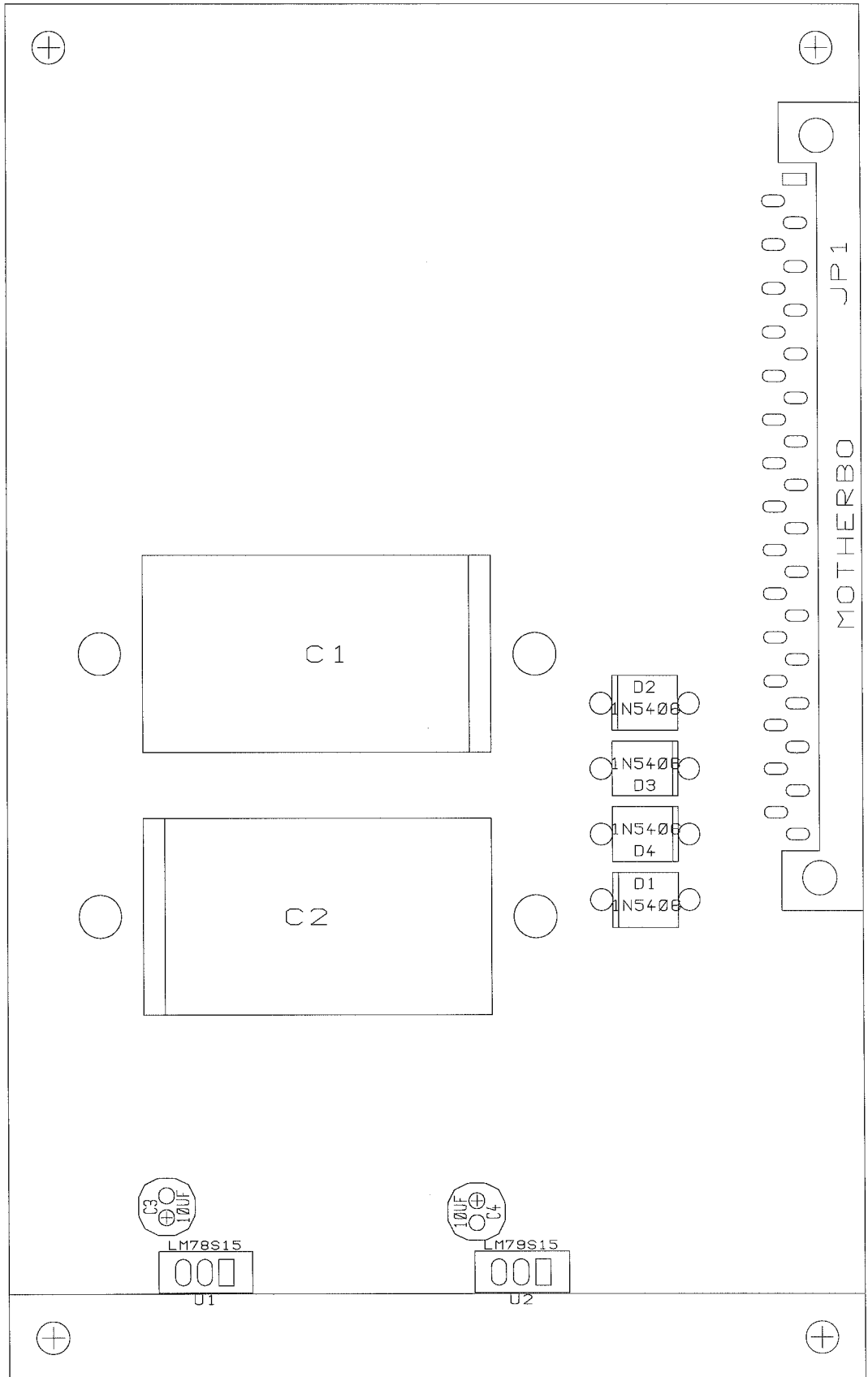
02 J 1919 19306 110759M

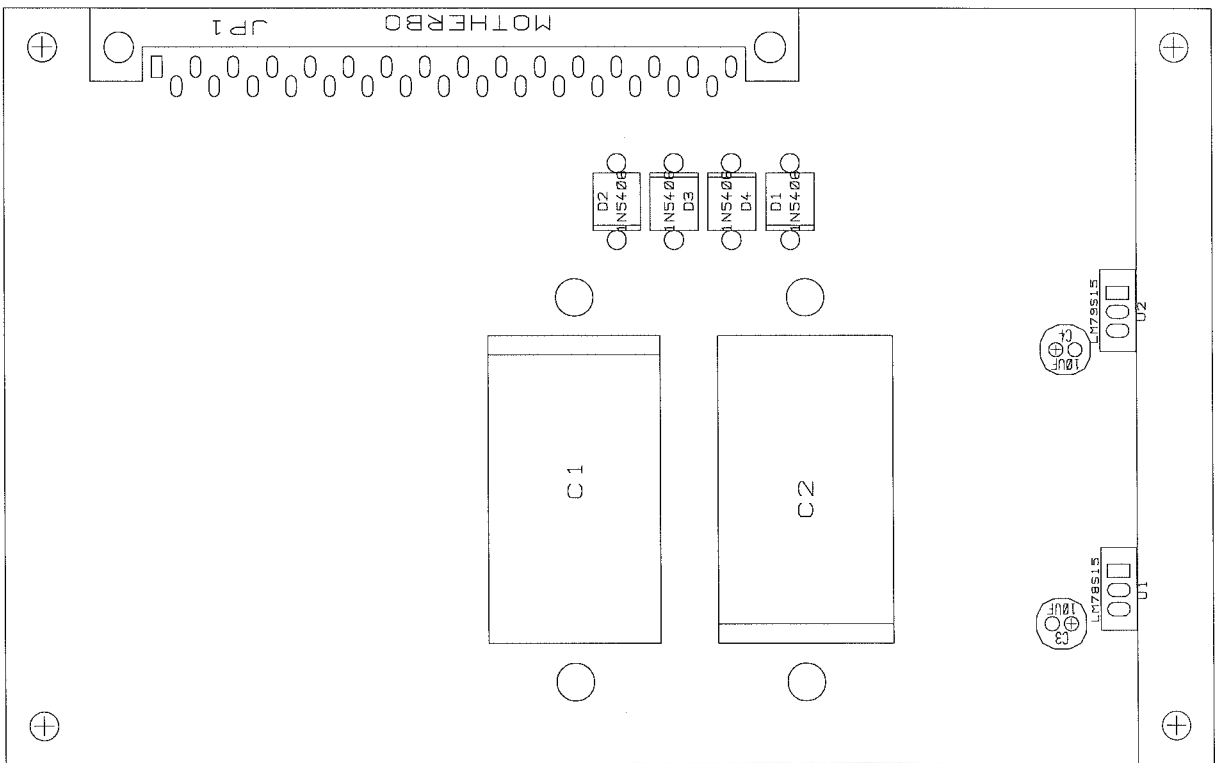


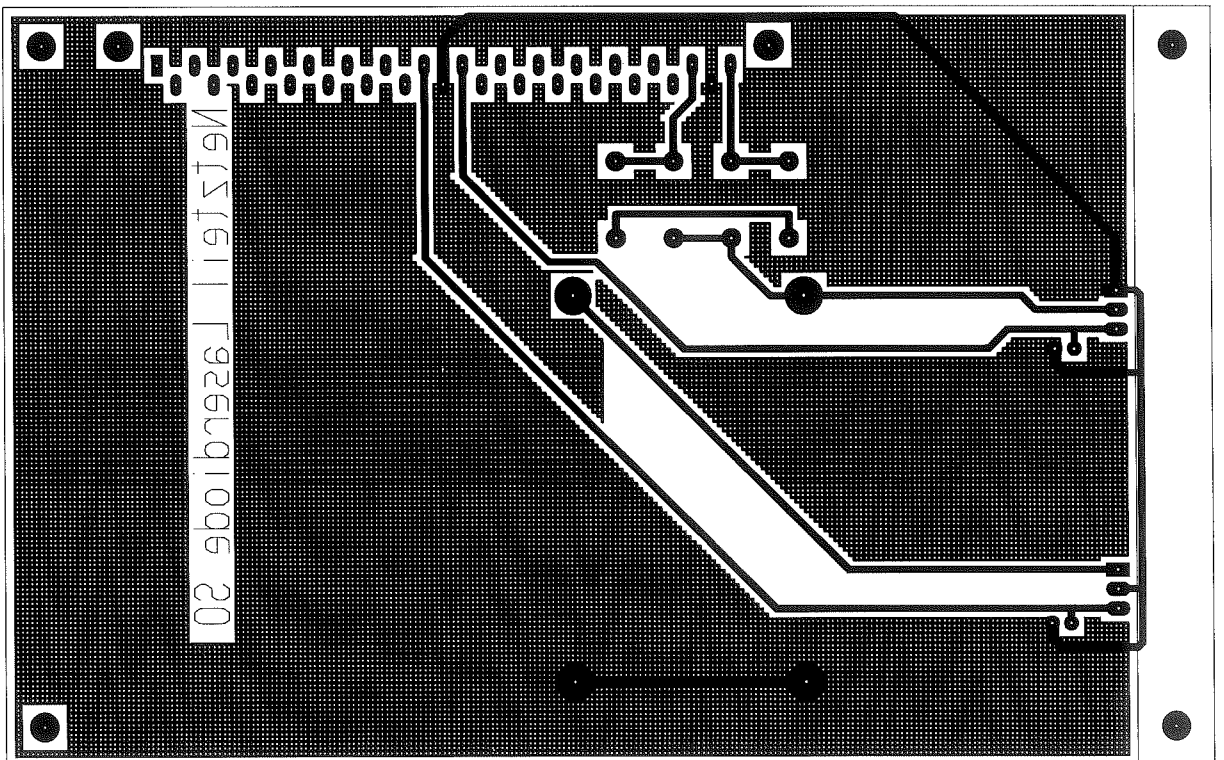


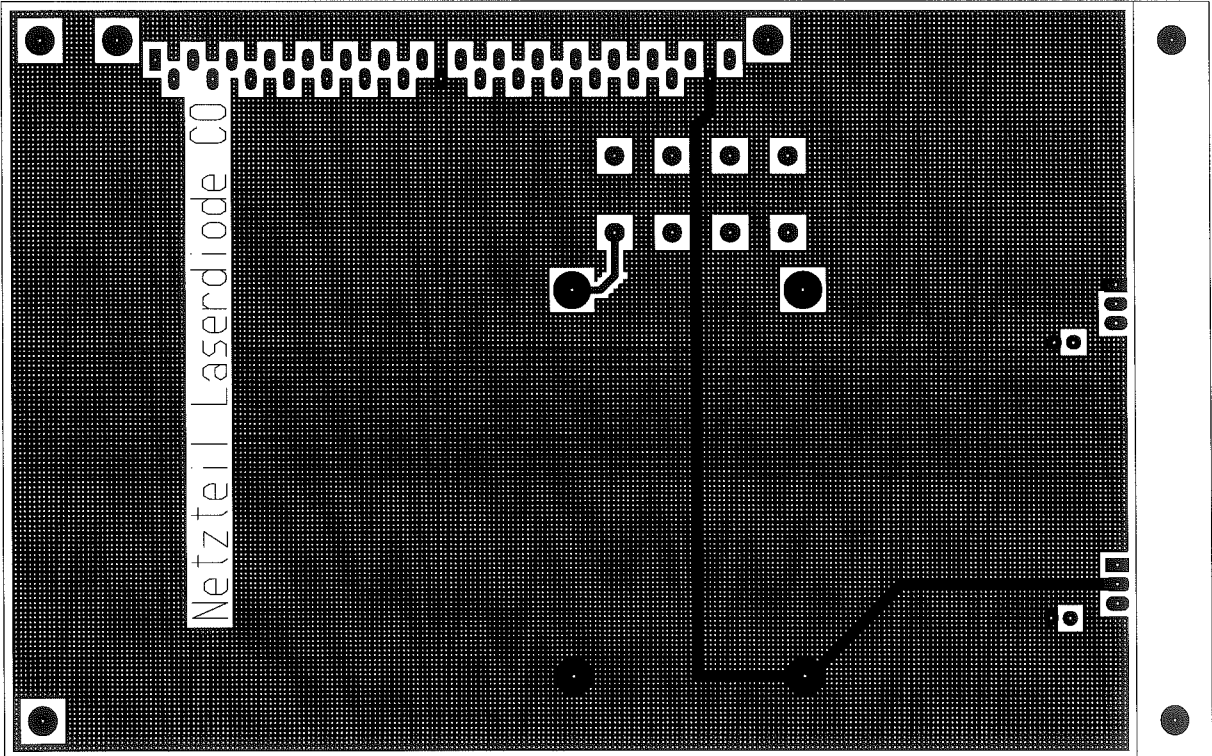
FH-Trier MB
 Laserlabor
 Prof. Schuth Berres

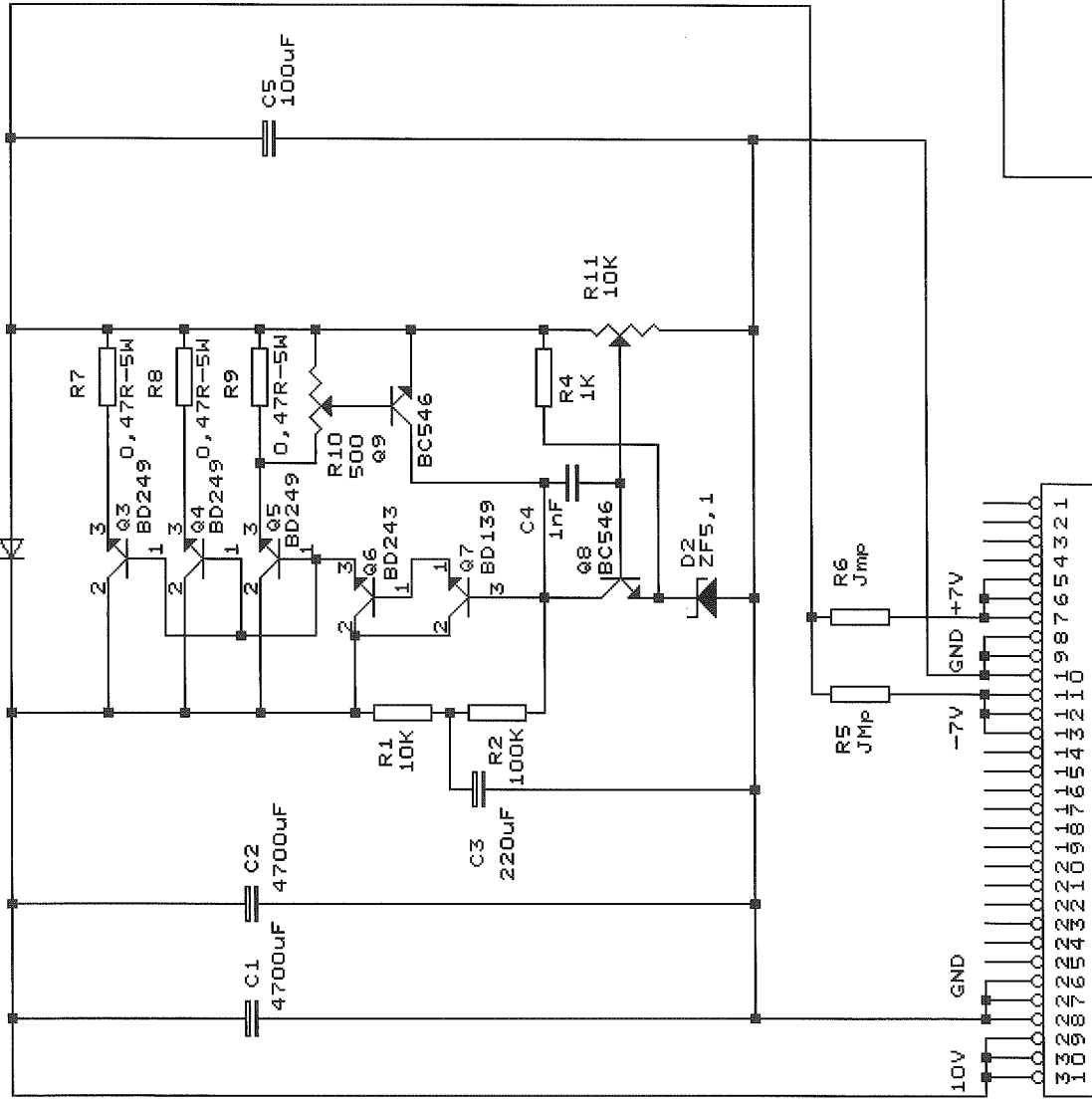
Title		NETZTEIL Laserdiode
Size		Document Number
A	LaserNT.sch	
Date:	April 14, 2008	Sheet 1 of 1











Bestueckung +7V
 Jumper R6 bestuecken

Aenderung fuer -7V

Transistor Q3,Q4,Q5 = BD250
 Transistor Q6 = BD244
 Transistor Q7 = BD140
 Transistor Q8, Q9 = BC556

Kondensator C1,C2,C3,
 Polaritaet vertauschen

Diode D1,D2
 Polaritaet vertauschen

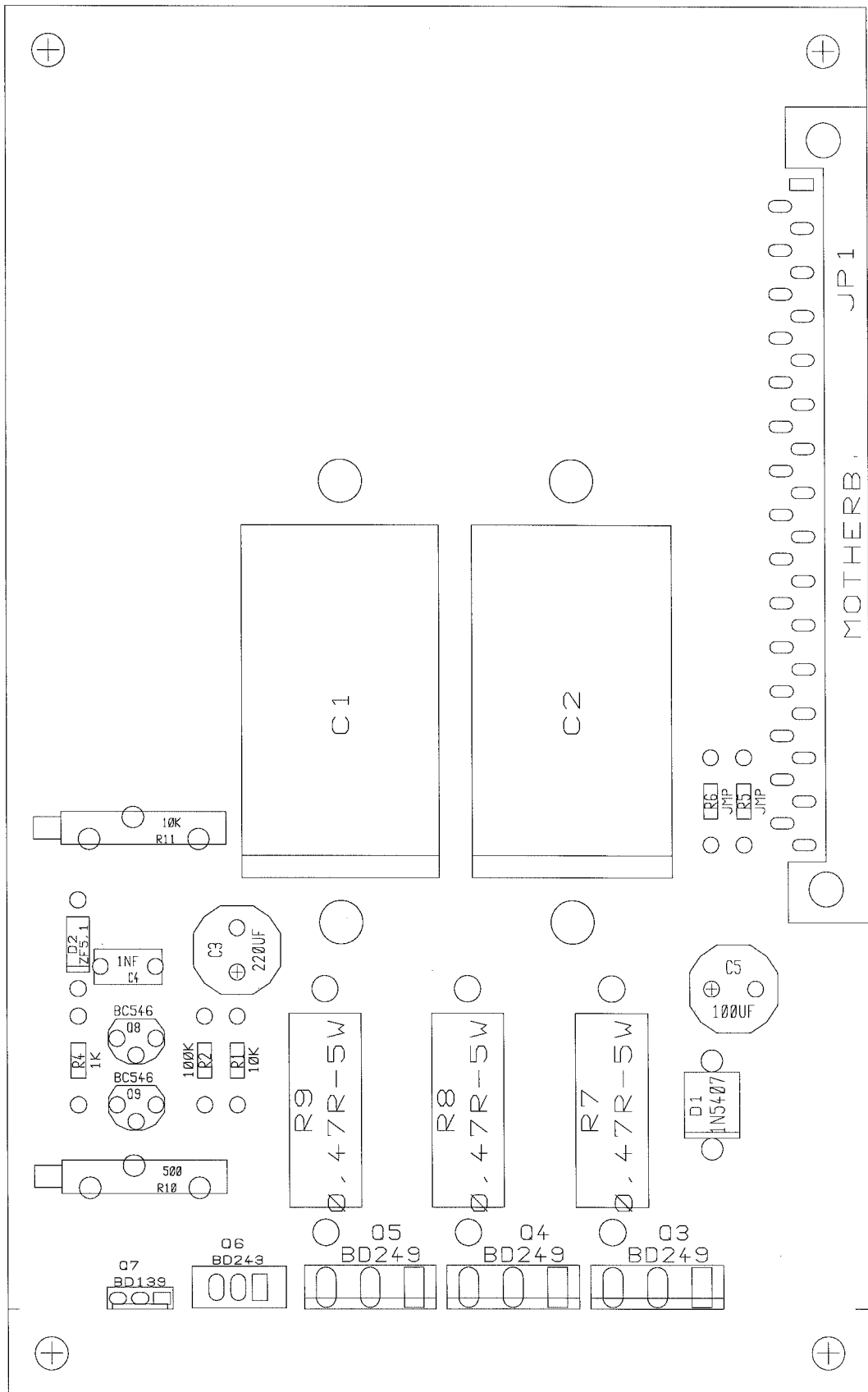
Jumper R5 bestuecken

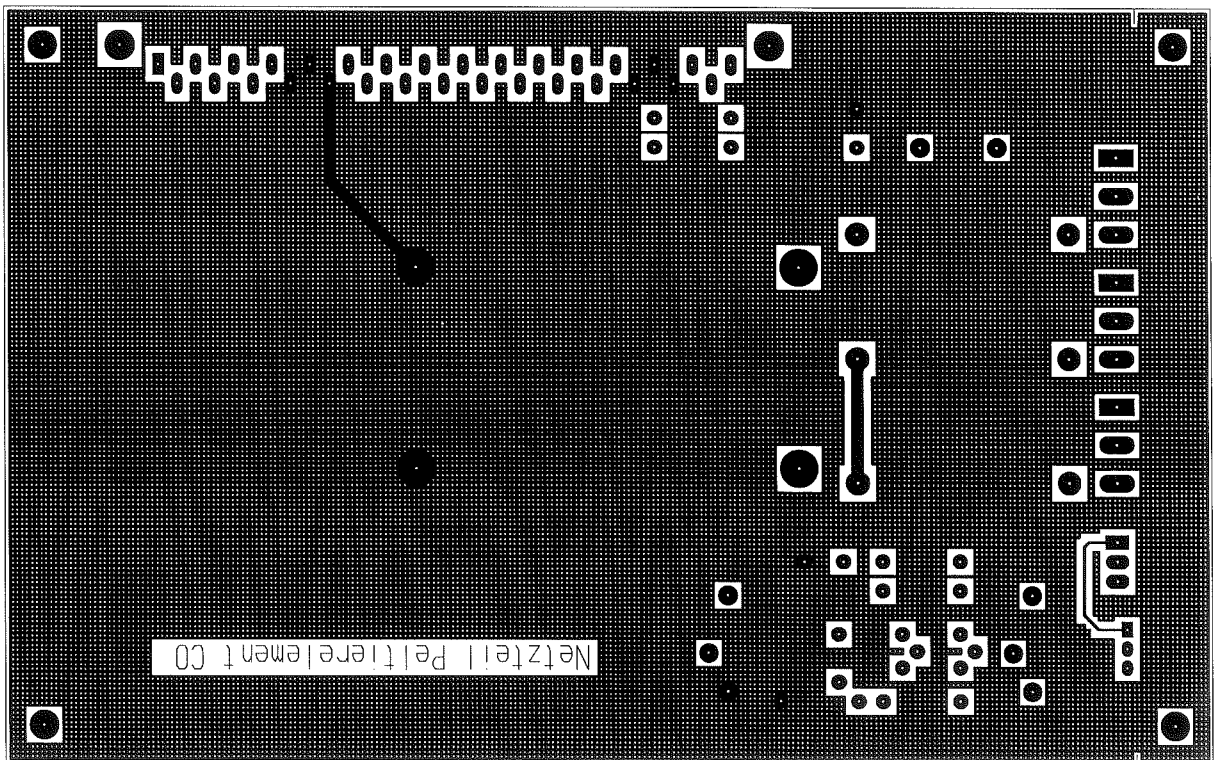
FH-Trier MB
 Laserlabor
 Prof. Schuth Berres

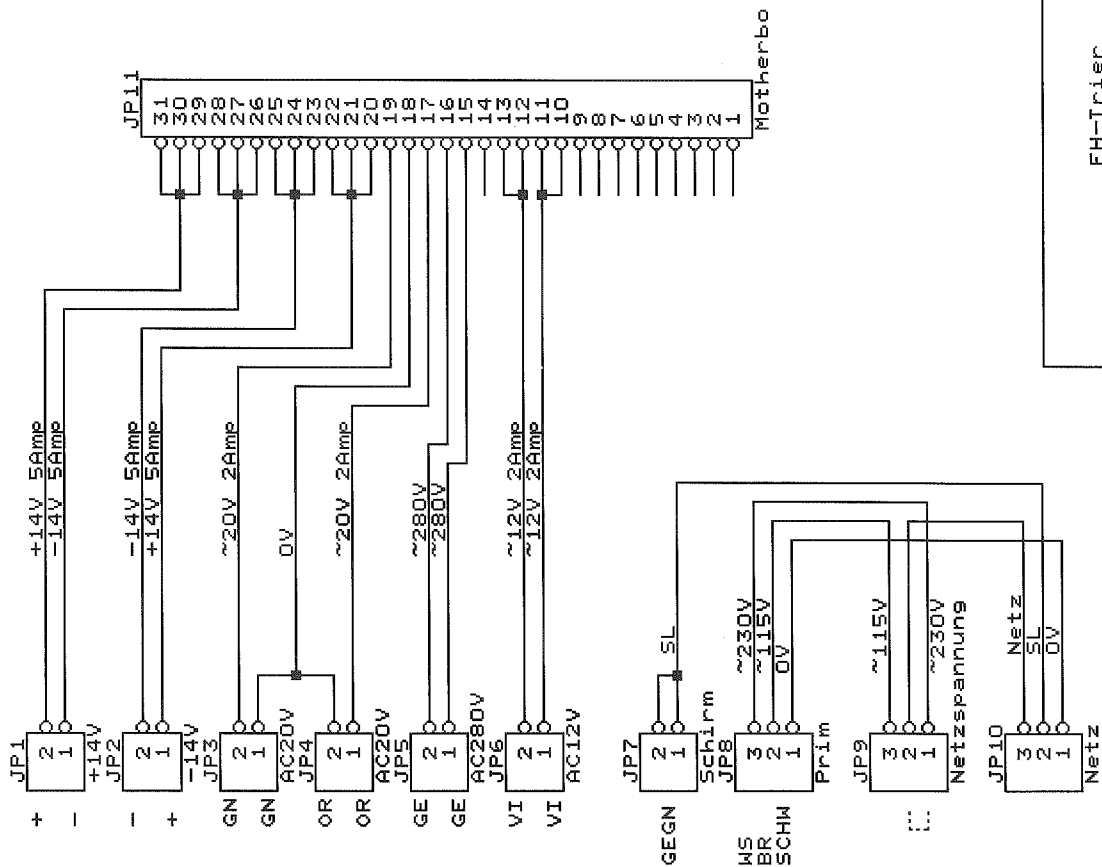
Title	
Netzteil 7Volt fuer Peltiersteuerung	
Size	Document Number
A	PeltNT.SCH
Date:	September 16, 2008
Sheet	of
REV	

J1
 Motherb.

109876543210987654321
 109876543210987654321





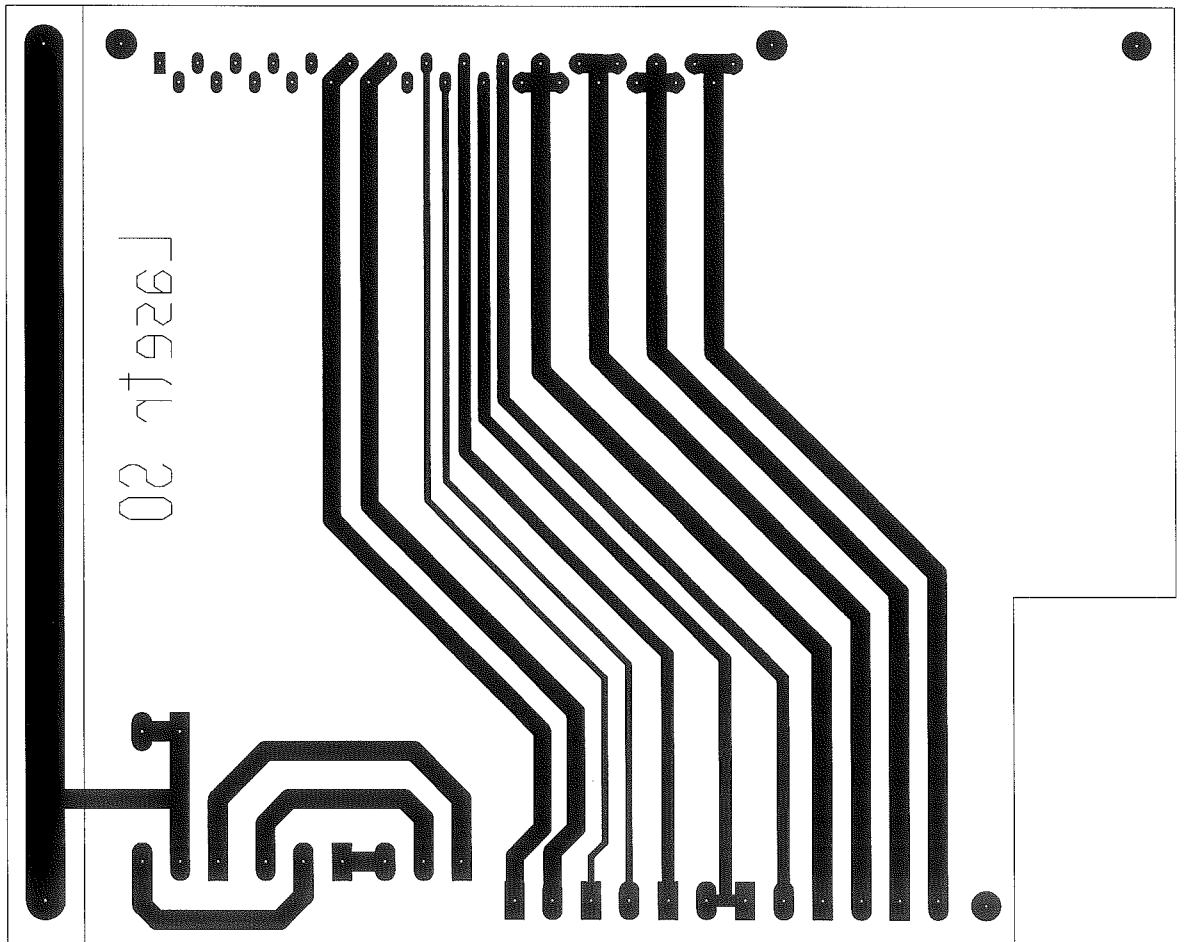


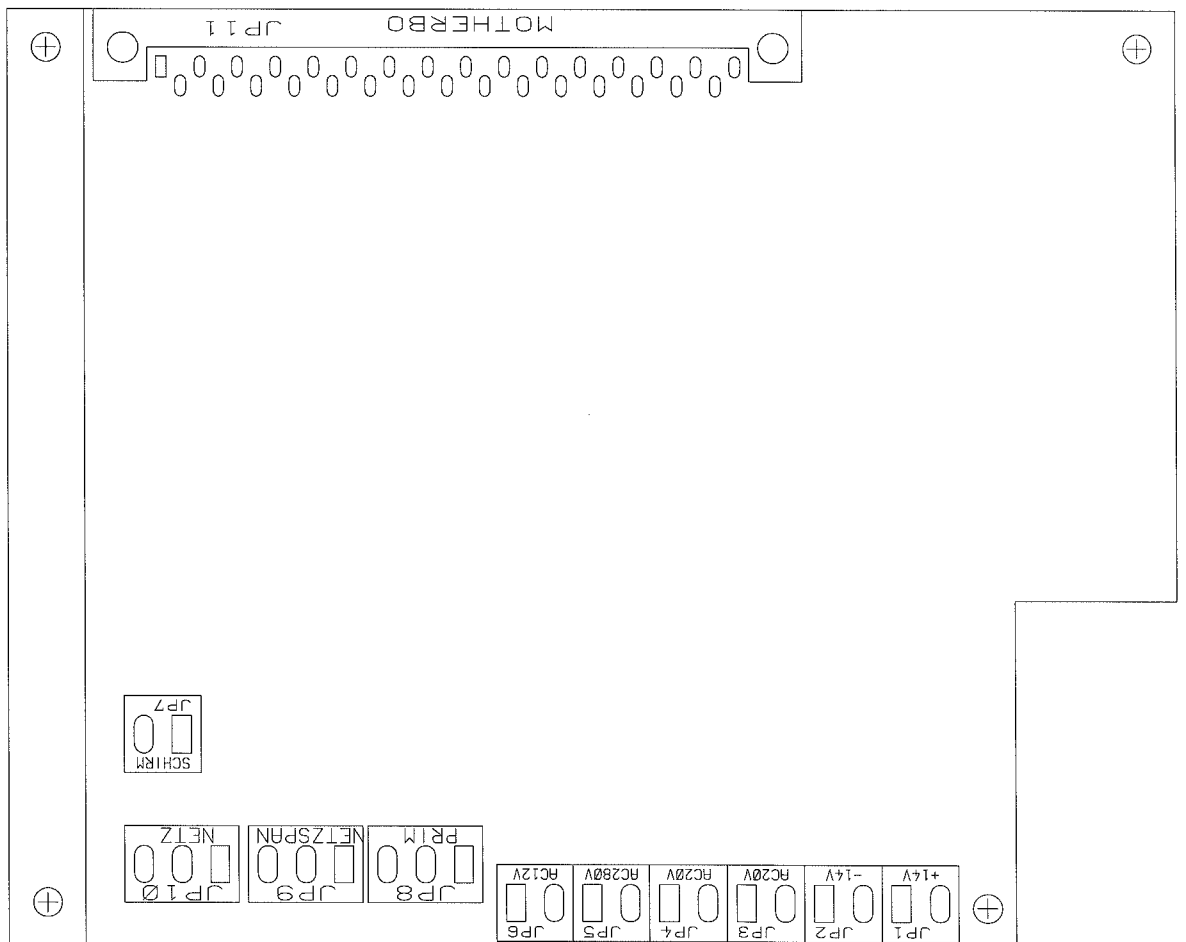
FH-Trier
 Laserlabor
 Prof.Schuth Berres

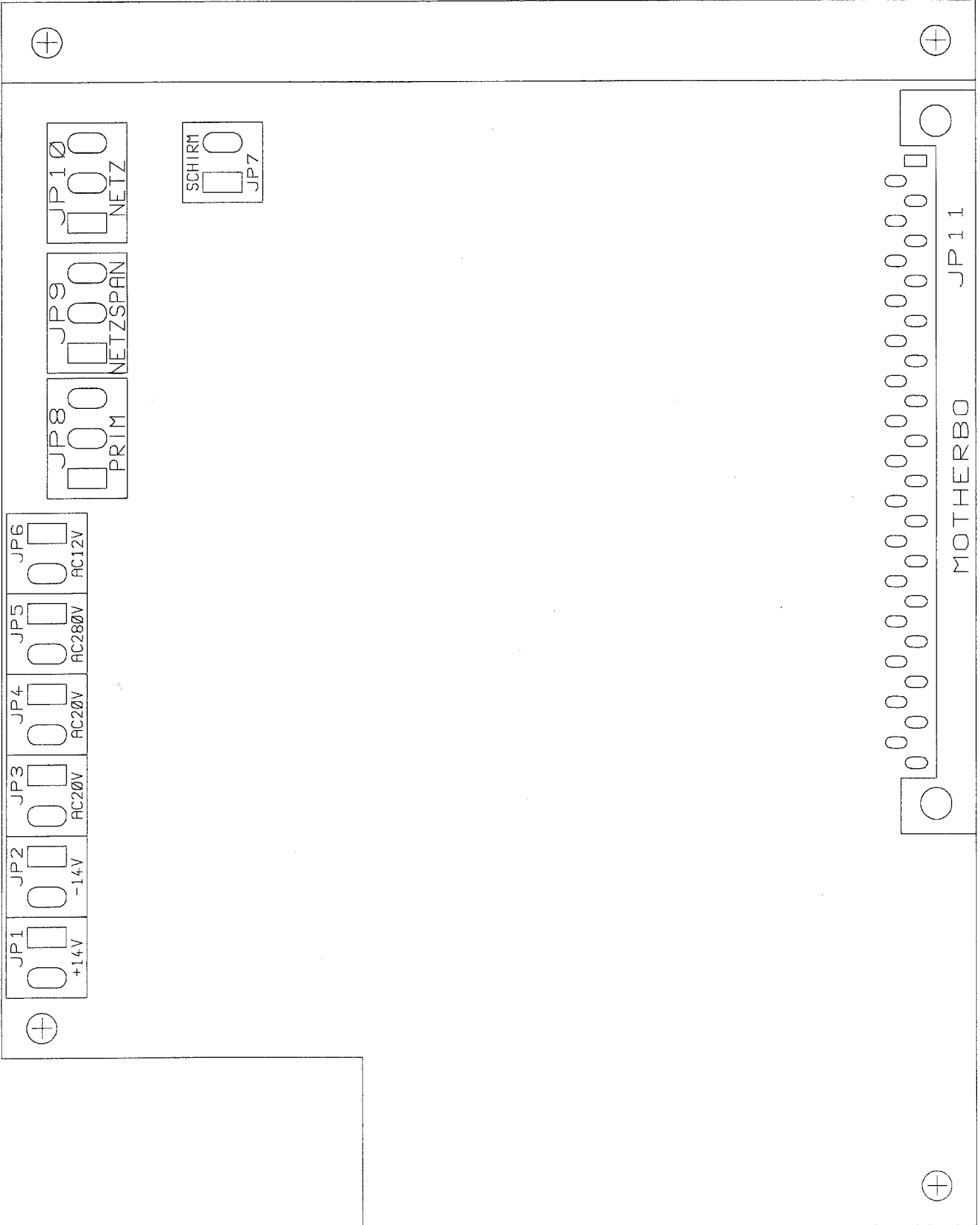
Title Leiterplatte Netztrafoeinheit

Size Document Number A lasetr.sch REV

Date: September 16, 2008 Sheet of





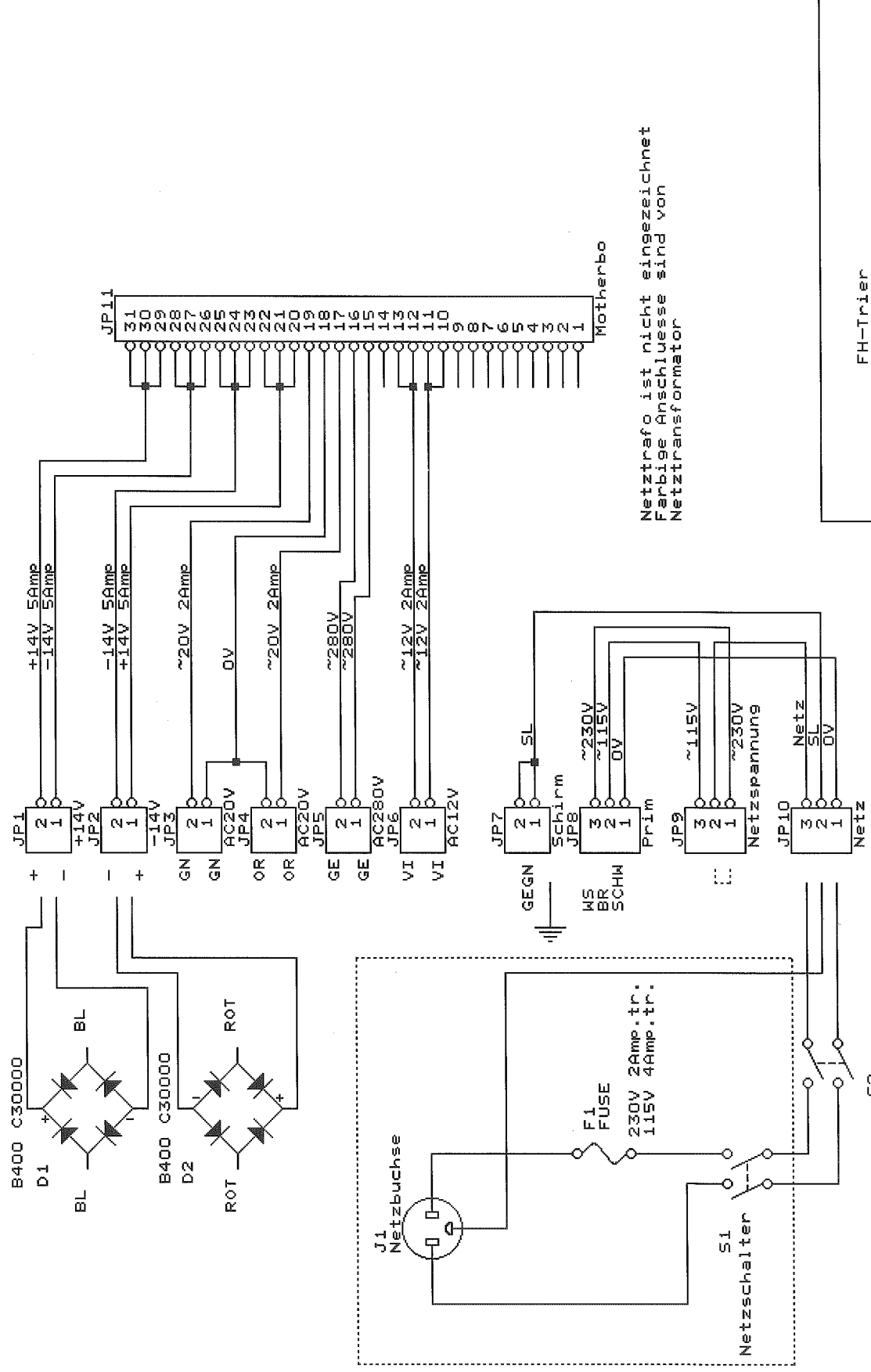


JP1 +14V
JP2 -14V
JP3 AC20V
JP4 AC20V
JP5 AC280V
JP6 AC12V

JP8 PRIM
JP9 NETZSPAN
JP10 NETZ

SCHIRM
JP7

MOTHERBO JP11

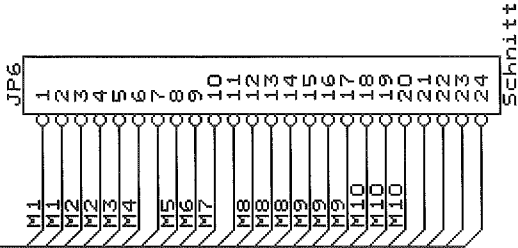
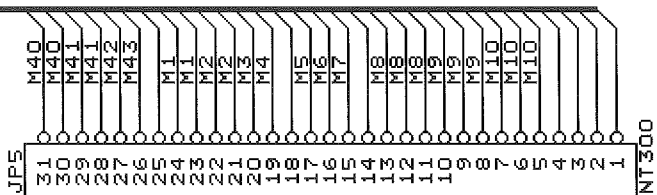
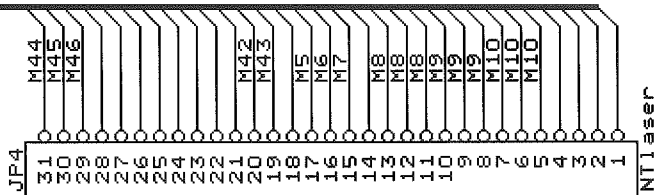
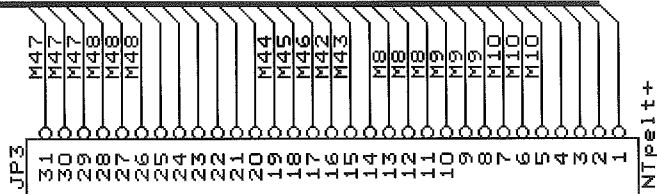
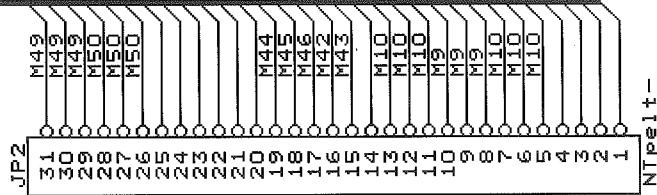
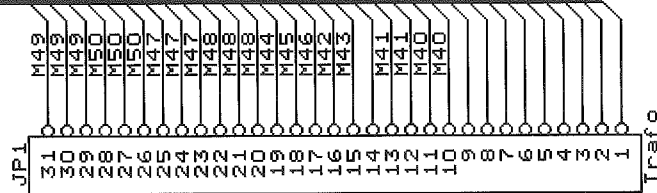


Netztrafo ist nicht eingezeichnet
 Farbige Anschlüsse sind von
 Netztrafoformator

FH-Trier
 Laserlabor
 Prof. Schuth Berres

Title		Netztrafoeinheit
Size		Document Number
A	LaserNT.sch	
Date:	September 16, 2008	Sheet of
REV		

MC1...503

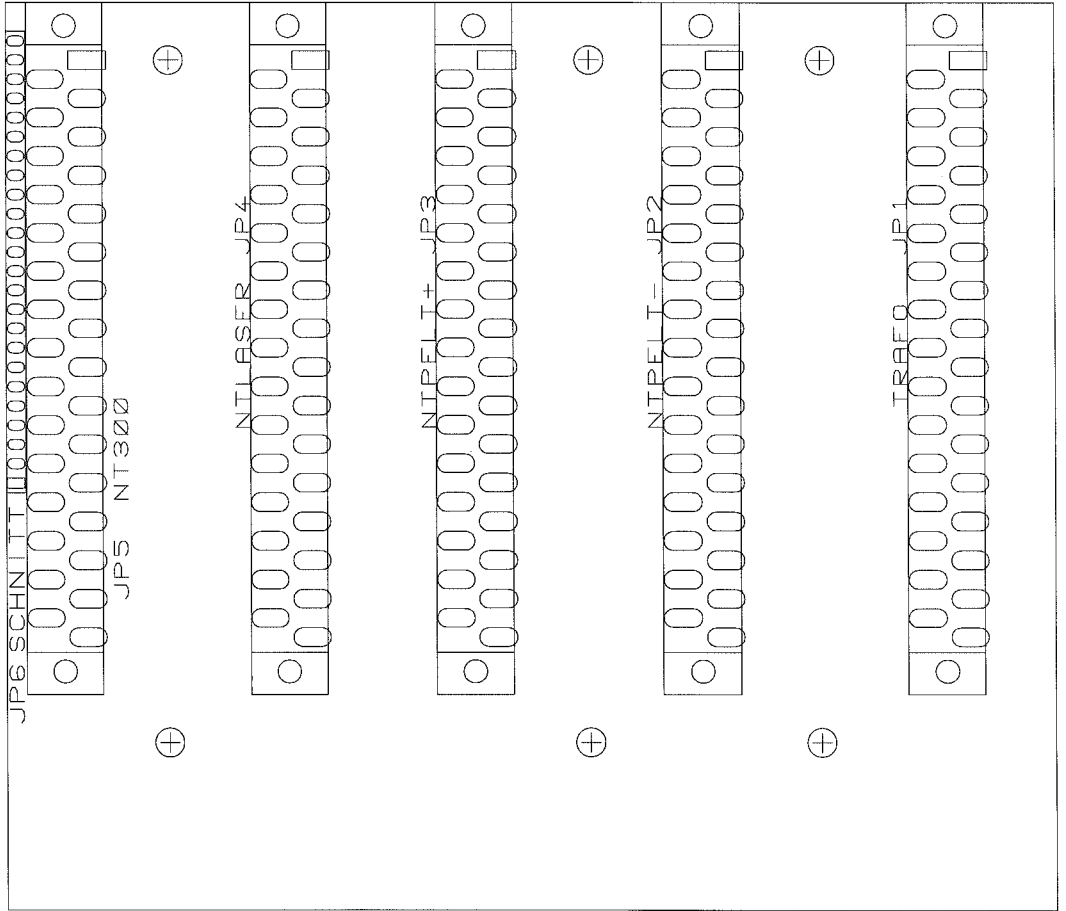


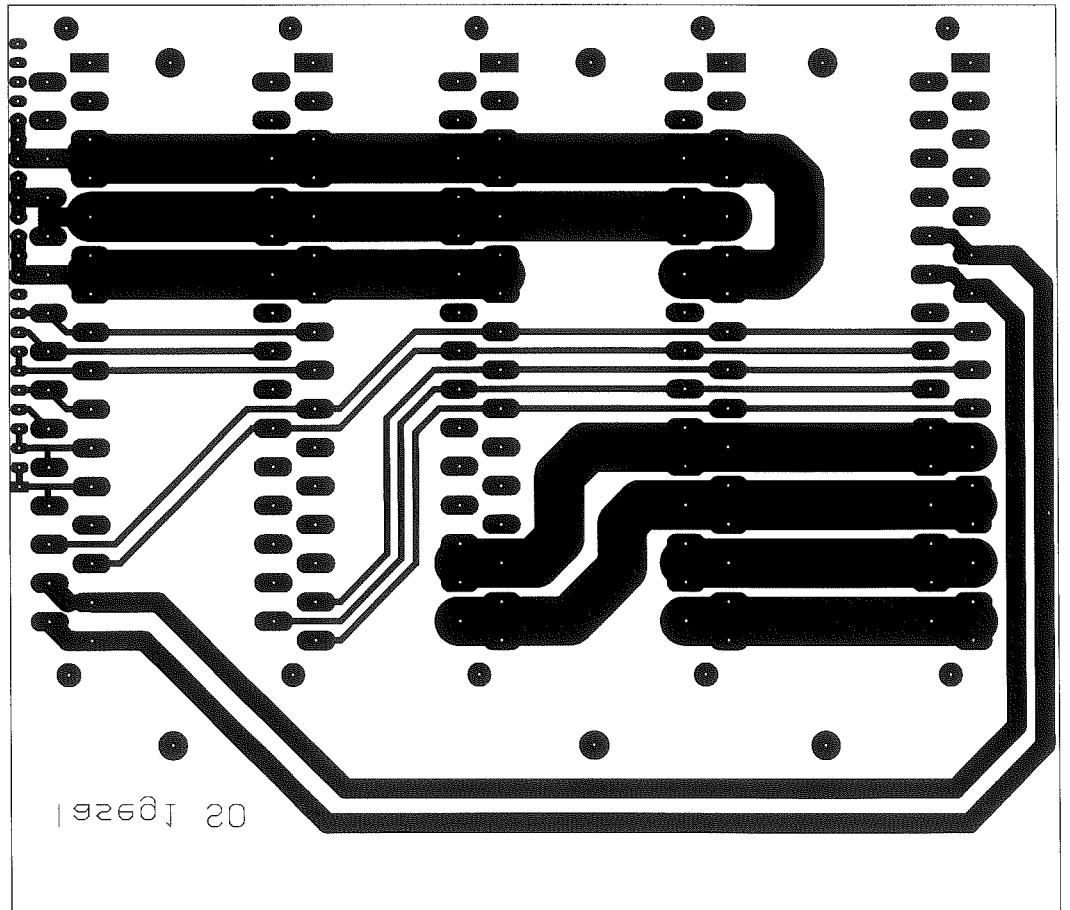
FH Trier
Laserlabor
Prof. Schuth Berres

Title Motherboard Platine 1

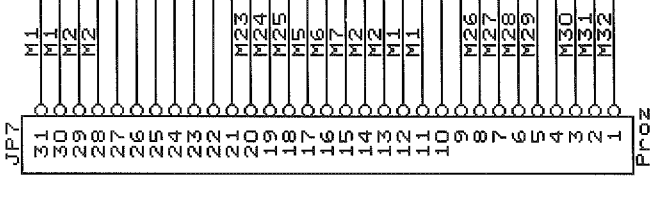
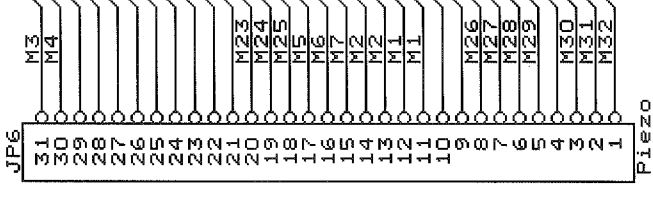
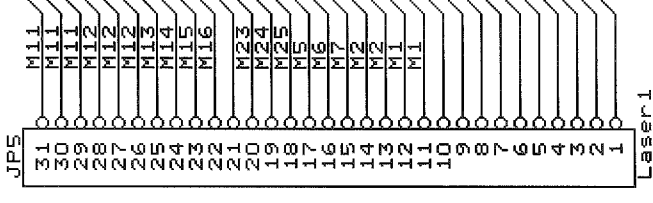
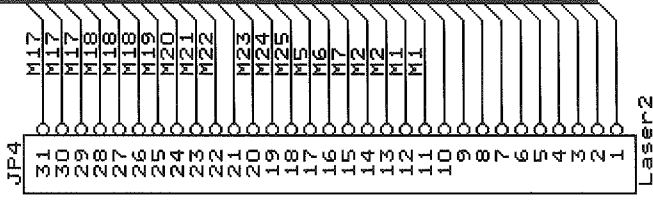
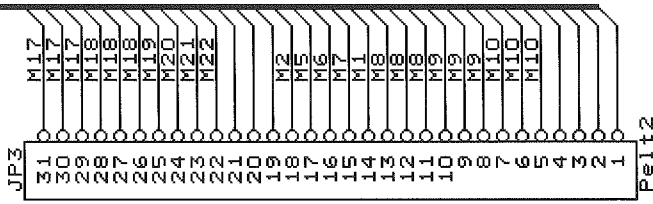
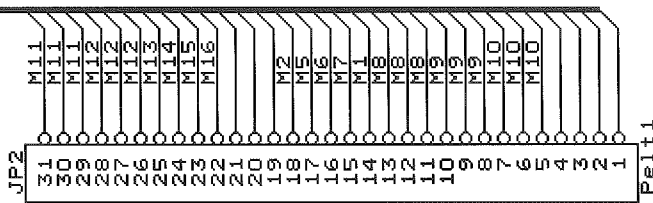
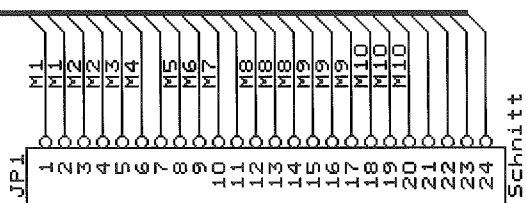
Size Document Number A LaseG1.5CH

Date: July 1, 2008 Sheet of REV





MC1.32



FH Trier
Laserlabor
Prof.Schuth Berres

Motherboard Platine 2

Title

Size Document Number

A

LaseG2.SCH

Date:

June 30, 2008

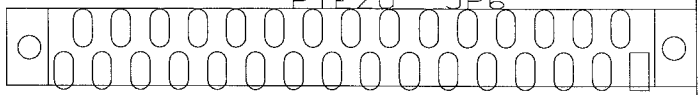
Sheet

REV

of



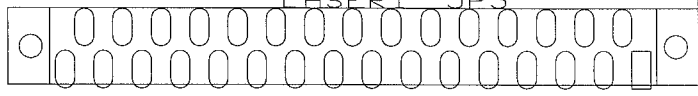
PROZ JP7



PIEZO JP6

⊕

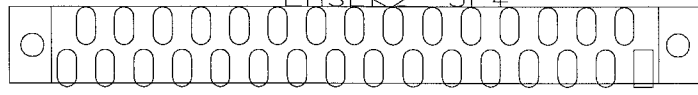
⊕



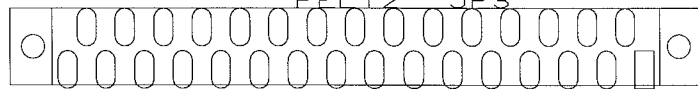
LASER1 JP5

⊕

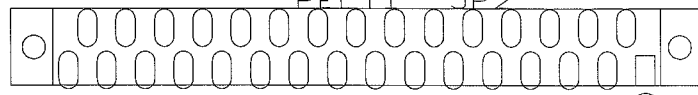
⊕



LASER2 JP4



PELT2 JP3



PELT1 JP2

⊕

⊕



JP1 SCHNITT

